

WEEKLY EARNINGS OF EMPLOYEES (DISTRIBUTION) AUSTRALIA

EMBARGO: 11:30AM (CANBERRA TIME) FRI 16 JAN 1998

CONTENTS

	<i>page</i>
Notes	2
Preface	3
Summary of findings	4

TABLES

List of tables	9
Weekly earnings of employees in all jobs	10
Weekly earning of employees in main job	15
Weekly earnings of full-time employees in main job	29
Weekly earnings of multiple jobholders	32
Standard employment benefits	33
Trade Union membership	38
Populations	41

ADDITIONAL INFORMATION

Explanatory notes	43
Technical notes	47
Glossary	51
Populations and data items available from the survey	54
Supplementary surveys listing	58

INQUIRIES

- For further information about these and related statistics, contact Kirillie Horswill by telephone on Canberra (02) 6252 6503 or facsimile on (02) 6252 7784, or any ABS office shown on the back cover of this publication.

NOTES

SYMBOLS AND OTHER USAGES

ABS	Australian Bureau of Statistics
ANZSIC	Australian and New Zealand Standard Industrial Classification
ASCO	Australian Standard Classification of Occupations
LFS	Labour Force Survey
n.a.	not available
RSE	Relative Standard Error
SE	Standard Error
*	subject to sampling variability too high for most practical uses
..	not applicable

As estimates have been rounded, discrepancies may occur between sums of the component items and totals.

STATE INQUIRIES

For State office contact numbers see the Supplementary Surveys listing in the back of this publication.

PREFACE

ABOUT THIS PUBLICATION

This publication presents information about the weekly earnings of employees. Data from this survey is used to examine the distribution of employee earnings cross classified by a range of personal characteristics such as age, sex and family type, and by characteristics of employment such as full-time and part-time status, permanent and casual status and size of employing establishment.

Statistics in this publication were obtained from the Australian Bureau of Statistics (ABS) survey, *Weekly Earnings of Employees (Distribution)*.

ABOUT THIS SURVEY

The *Weekly Earnings of Employees (Distribution)* Survey was conducted throughout Australia in August 1997 as a supplement to the ABS monthly Labour Force Survey. The survey has been conducted annually since 1975 except for 1996.

Data was collected from persons who were employees in their main job. This survey collected details about occupation, industry and earnings. Other information available includes details about standard benefits provided by employers, trade union membership and superannuation coverage.

GENERAL ACKNOWLEDGMENT

ABS publications draw extensively on information provided freely by individuals, business, governments and other organisations. Their continued cooperation is very much appreciated: without it, the wide range of statistics published by the ABS would not be available. Information received by the ABS is treated in strict confidence by the *Census and Statistics Act 1905*.

W. McLennan
Australian Statistician

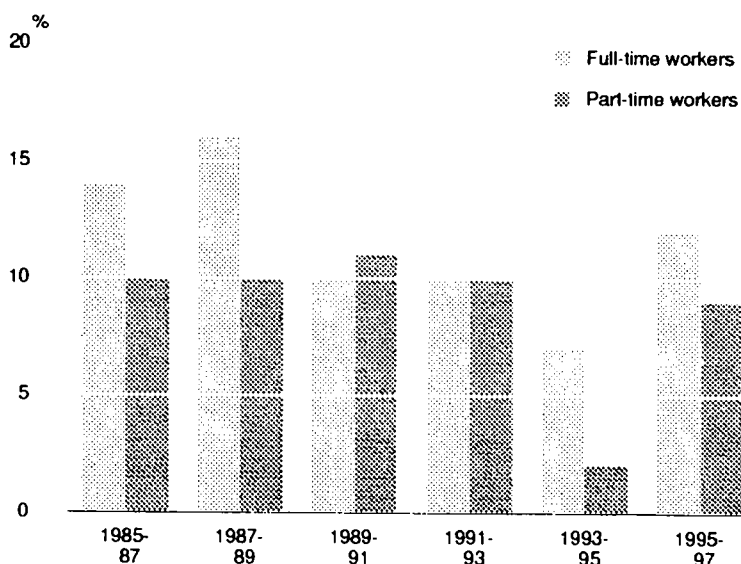
SUMMARY OF FINDINGS

WEEKLY EARNINGS OF FULL-TIME AND PART-TIME WORKERS (IN ALL JOBS)

There were 6,972,100 employees aged 15 years and over in August 1997. Some 74% were full-time workers and 26% were part-time workers. Mean weekly earnings of both full-time and part-time workers increased between August 1995 and August 1997.¹ Mean weekly earnings of full-time workers increased 12%, from \$630 in August 1995 to \$703 in August 1997. Mean weekly earnings for part-time workers increased 9%, from \$231 to \$252 over the same period.

Mean weekly earnings for full-time and part-time workers have been increasing since the late 1980s, however the rate of the increase has fluctuated, reflecting in part rises and falls in the economic cycle. For full-time workers the percentage increase was 10% between August 1989 and July 1991, 10% between July 1991 and August 1993, and 7% between August 1993 and August 1995. For part-time workers the percentage increases were 11%, 10% and 2%.

INCREASE IN MEAN WEEKLY EARNINGS



Differences in mean weekly earnings across States and Territories

In August 1997, full-time workers who were residents of the Australian Capital Territory had the highest mean weekly earnings of the States and Territories at \$804, while Tasmania recorded the lowest at \$625. Over the period 1988-97, mean weekly earnings in the Northern Territory increased the least (on average 4% per year), while the highest increase (on average 5% per year) was recorded in New South Wales.

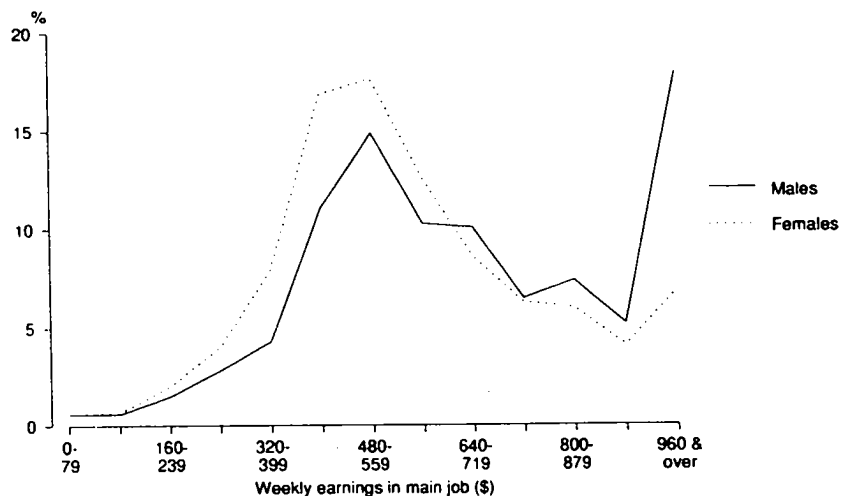
¹ It should be noted that these comparisons could be affected by compositional changes in the wage and salary segment of the labour market, such as changes in the mix of occupations and industries of jobs and in the average number of hours paid for, for both full-time and part-time workers.

**WEEKLY EARNINGS OF
FULL-TIME AND PART-TIME
EMPLOYEES (IN MAIN JOB)**

Of the 6,972,100 employees in August 1997 almost three-quarters (5,055,800) were full-time employees in their main job. Just over half (55%) of female employees and the majority of male employees (87%) worked full-time in their main job. Mean weekly earnings of full-time employees were \$752 for males and \$606 for females, while median weekly earnings were \$605 and \$533 respectively. The distribution of earnings for full-time employees shows relatively more females than males in lower and middle income groups. This situation is reversed in higher income groups.

The proportion of female full-time employees whose weekly earnings were less than \$320 was 7%, 55% were in the range \$320-\$639, 25% in the range \$640-\$959 and 7% had weekly earnings over \$960. In comparison for male full-time employees the proportions of weekly earnings in these ranges were 6%, 41%, 29% and 18%.

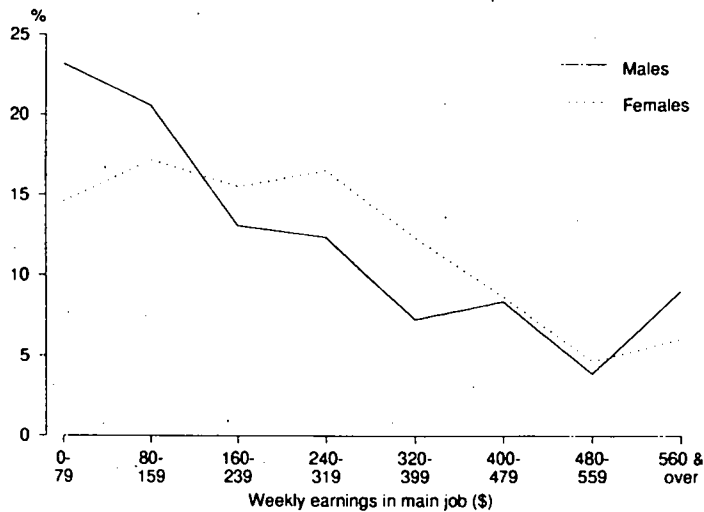
WEEKLY EARNINGS, FULL-TIME EMPLOYEES



Mean weekly earnings for the 504,000 male part-time employees were \$254 and for the 1,412,400 female part-time employees they were \$264. The median weekly earnings were \$170 and \$228 respectively.

The proportions of male and female part-time employees were roughly similar across earnings groups with the largest differential in the lowest earnings group. The proportion of females whose weekly earnings were less than \$160 was 32%, 32% were in the range \$160-\$320, 21% in the range \$320-\$480 and 11% had weekly earnings over \$480. In comparison the proportions of male weekly earnings in these ranges were 44%, 26%, 16% and 11%.

WEEKLY EARNINGS, PART-TIME EMPLOYEES



Permanent and casual employees

The majority of full-time employees were in permanent employment in August 1997 (89%) while the majority of part-time employees were in casual employment (66%). Permanent employees had higher mean weekly earnings than casual employees in both full-time (\$713 compared to \$613) and part-time work (\$345 compared to \$218).

Males had higher mean weekly earnings than females in permanent full-time employment (\$764 compared to \$616) but were lower in permanent part-time employment (\$322 compared to \$349). Casual male employees earned more than females in both full-time (\$656 compared to \$510) and part-time work (\$240 compared to \$206).

Public and private sector

There was a decrease of 8% (135,400) in the number of public sector employees in the two years ending August 1997, while the number of private sector employees rose by 4% (225,400).

Public sector employees had higher mean weekly earnings than employees in the private sector for both full-time (\$769 compared to \$681) and part-time work (\$334 compared to \$247). In the two years to August 1997 public sector mean weekly earnings for full-time employees increased at similar rates to those in the private sector (13% compared to 12%). However, mean weekly earnings for part-time employees grew at a higher rate in the private sector (12% compared to 9% in the public sector).

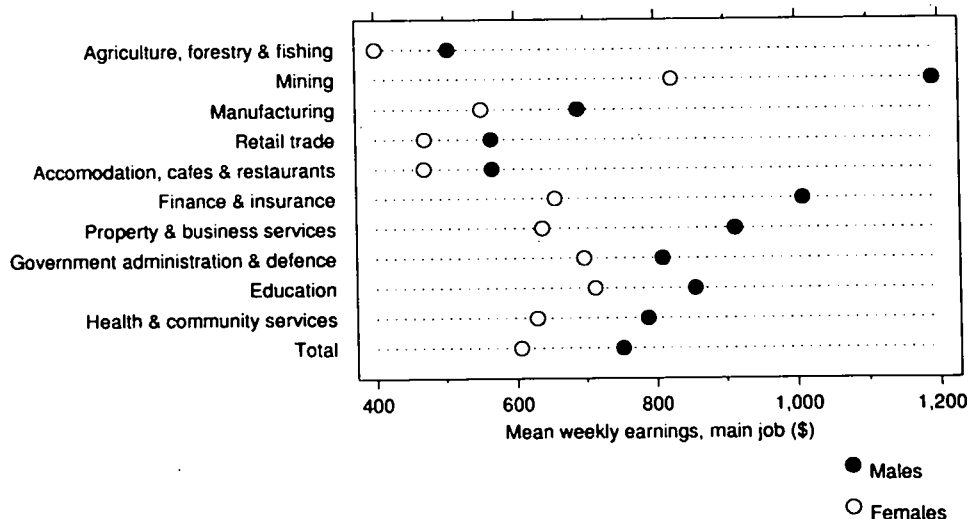
There were relatively more private sector employees in lower earnings groups, than public sector employees. The proportion of private sector employees whose weekly earnings were less than \$320 was 25%, 41% were in the range \$320-\$639, 18% in the range \$640-\$959 and 10% had weekly earnings over \$960. In comparison the proportions of public sector employees whose weekly earnings in these ranges were 12%, 37%, 33% and 14%.

Age Males had higher mean weekly earnings than females across all age groups for both full-time and part-time work. Mean weekly earnings generally rose with age, peaking at \$677 for employees aged 45–54 years then falling to \$425 for employees aged 65 and over. Employees with the lowest mean weekly earnings were aged 15–19 years (\$191), mainly due to the higher proportions of part-time employees (65%).

Birthplace Some 24% of employees (1,661,600) were born outside Australia. Of these, 44% were born in main English speaking countries. Mean weekly earnings for persons born in Australia were \$672 for males and \$442 for females while for those born outside Australia mean weekly earnings were \$728 for males and \$482 for females. For persons born in main English speaking countries, mean weekly earnings were \$831 for males and \$517 for females. This compared to mean weekly earnings of persons from other than main English speaking countries, of \$651 for males and \$454 for females.

Industry Full-time employees in Agriculture, forestry and fishing, Accommodation, cafes and restaurants and Retail recorded the lowest mean weekly earnings in the main job (\$488, \$527 and \$532 respectively). The highest level of mean weekly earnings for full-time employees were recorded in Mining (\$1,163), followed by Electricity, gas and water supply (\$836).

MEAN WEEKLY EARNINGS, FULL-TIME EMPLOYEES, SELECTED INDUSTRIES



Occupation The lowest mean weekly earnings for full-time and part-time employees were recorded for Labourers and related workers (\$521 for full-time employees and \$219 for part-time employees) and Elementary clerical, sales and service workers (\$522 and \$171). The highest mean weekly earnings for both full-time and part-time employees were recorded by Managers and administrators (\$1,057 by full-time employees and \$412 by part-time employees), followed by Professionals (\$884 and \$407).

Employment benefits in
main job

In August 1997, 98% of the 5,055,800 full-time employees received one or more standard employment benefits in their main job – 95% received superannuation, 88% received sick leave, 88% received holiday leave and 76% received long service leave. In comparison, 73% of the 1,916,400 part-time employees received one or more standard employment benefits.

Proportionally more public sector employees received standard benefits than private sector employees. Of the 1,542,200 public sector employees, 95% received superannuation, 87% received holiday leave, 88% received sick leave and 85% received long service leave. In comparison, of the 5,430,000 private sector employees, the proportions were 86%, 69%, 68% and 57%, respectively.

Employees at larger workplaces received more standard benefits. The proportion of employees receiving one or more benefits was 83% where size of location was less than 10 employees, 89% where there were 10 to 19 employees, 93% where there were 20 to 99 employees and 97% where there were 100 or more employees.

By industry, Electricity, gas and water (100%) had the highest proportion of persons in receipt of standard benefits, followed closely by Finance and insurance (99%). Retail (78%) and Accommodation, cafes and restaurants (79%) had the lowest proportion of people receiving benefits.

Trade union membership

In August 1997, 30% (2,110,300) of employees were members of a trade union, a fall of 2 percentage points from August 1995. The number of full-time employees who reported that they were a member of a trade union fell from 36% (1,854,000) in August 1995, to 34% (1,702,100) in August 1997.

In comparison, the number of part-time employees who reported that they were a member of a trade union rose from 397,800 in August 1995 to 408,300 in August 1997. However, this increase did not match the rate of growth of part-time employees over the year. The corresponding proportion of employees who were members of a trade union actually fell from 22% to 21%.

The proportion of public sector employees who reported that they were members of a trade union (55%), was more than double the number of private sector employees who reported that they were members of a trade union (23%). By industry, trade union membership was highest in Electricity, gas and water industry (66%) and the Communication services industry (60%). Employees in Agriculture, forestry and fishing reported the lowest trade union membership (7%).

LIST OF TABLES

Weekly earnings of employees in all jobs

1	Mean weekly earnings of full-time and part-time workers by State or Territory of usual residence, August 1988 to August 1997	10
2	Full-time and part-time workers by sex	12
3	Full-time and part-time workers by relationship in household	13

Weekly earnings of employees in main job

4	Mean weekly earnings of full-time and part-time employees by selected characteristics	15
5	Full-time and part-time employees by selected characteristics	16
6	Hours paid by sex	17
7	Full-time and part-time employees by permanent and casual status	19
8	Full-time and total employees by occupation and sector	21
9	Full-time and total employees by industry	25

Weekly earnings of full-time employees in main job

10	Age	29
11	Size of location	31

Weekly earnings of multiple jobholders

12	Weekly earnings in main and second job by sex	32
----	---	----

Standard employment benefits

13	Benefits received by selected characteristics	33
14	Source of superannuation coverage by industry and weekly earnings	36

Trade union membership

15	Full-time and part-time employees by selected characteristics	38
----	---	----

Populations

16	State or Territory of usual residence	41
17	Mean weekly earnings by State or Territory of usual residence	42

TABLE 1: MEAN WEEKLY EARNINGS IN ALL JOBS OF FULL-TIME AND PART-TIME WORKERS, AUGUST(a)
($\$$)

	NSW	Vic.	Qld	SA	WA	Tas.	NT	ACT	Aust.
MALES									
<i>Full-time workers –</i>									
1988	486	472	458	455	485	451	540	571	477
1989	527	516	506	491	456	487	583	617	521
1990(b)	557	545	520	530	554	517	623	639	546
1991(c)	586	569	540	534	597	540	604	660	571
1992	601	584	566	557	619	552	633	703	591
1993	656	615	589	587	661	567	679	731	628
1994	662	674	617	608	700	588	694	743	656
1995	694	676	621	632	705	632	666	779	673
1997	782	746	714	683	795	648	788	875	753
<i>Part-time workers –</i>									
1988	189	153	157	149	146	166	343	144	167
1989	179	166	162	164	164	161	180	173	170
1990(b)	207	172	168	149	165	172	115	170	180
1991(c)	205	201	174	189	210	196	162	191	197
1992	225	189	191	164	182	179	215	157	198
1993	233	184	168	243	226	156	260	220	207
1994	214	202	185	191	202	192	271	182	203
1995	216	210	202	212	200	182	*246	244	210
1997	236	212	278	218	195	230	184	206	231
<i>Total –</i>									
1988	468	452	437	436	465	435	530	530	457
1989	502	491	479	469	522	463	560	567	495
1990(b)	532	517	493	503	527	494	589	601	520
1991(c)	559	538	509	506	564	506	577	617	541
1992	568	543	530	521	578	515	592	652	553
1993	618	577	547	552	617	526	638	672	589
1994	610	623	574	572	652	546	660	668	608
1995	647	623	576	585	649	588	634	701	623
1997	719	680	659	627	732	595	725	785	691
FEMALES									
<i>Full-time workers –</i>									
1988	390	375	350	368	373	377	428	447	379
1989	418	408	390	405	404	392	533	484	411
1990(b)	443	441	404	424	424	404	500	520	435
1991(c)	475	466	437	453	462	439	494	570	465
1992	502	488	460	472	487	473	526	591	489
1993	527	518	479	502	499	467	549	609	513
1994	536	532	499	520	517	492	588	598	527
1995	571	554	527	525	510	522	547	638	550
1997	632	606	588	598	560	572	603	699	608
<i>Part-time workers –</i>									
1988	186	204	160	188	175	149	204	199	185
1989	197	190	173	191	184	174	215	199	189
1990(b)	214	199	188	203	194	193	238	203	202
1991(c)	216	215	190	205	200	208	188	227	208
1992	234	220	203	214	203	197	269	218	219
1993	243	229	218	240	224	221	235	266	233
1994	246	240	226	239	237	212	255	259	239
1995	245	235	221	254	227	241	223	268	237
1997	271	256	251	263	232	251	250	287	258
<i>Total –</i>									
1988	317	313	276	292	290	274	368	365	306
1989	337	326	305	309	311	292	449	383	326
1990(b)	360	351	315	327	324	313	403	421	345
1991(c)	379	369	337	345	346	334	411	470	365
1992	393	377	350	351	363	341	457	447	376
1993	411	400	369	386	372	353	466	487	397
1994	424	407	387	389	391	351	491	481	407
1995	442	419	400	398	385	393	446	492	420
1997	484	454	441	430	409	401	484	553	457

TABLE 1: MEAN WEEKLY EARNINGS IN ALL JOBS OF FULL-TIME AND PART-TIME WORKERS, AUGUST(a) - *continued*
(S)

	<i>NSW</i>	<i>Vic.</i>	<i>Qld</i>	<i>SA</i>	<i>WA</i>	<i>Tas.</i>	<i>NT</i>	<i>ACT</i>	<i>Aust.</i>
PERSONS									
<i>Full-time workers -</i>									
1988	454	440	425	428	452	431	497	522	445
1989	491	479	469	465	502	459	563	564	485
1990(b)	519	509	483	497	513	483	583	593	509
1991(c)	548	533	506	507	554	508	562	625	535
1992	568	551	531	530	577	527	590	663	557
1993	611	581	553	558	611	535	627	683	589
1994	617	625	577	579	642	559	654	684	612
1995	651	633	588	596	640	596	619	724	630
1997	729	697	670	655	719	625	714	804	703
<i>Part-time workers -</i>									
1988	186	194	160	181	170	152	232	185	181
1989	193	185	171	186	180	171	207	192	185
1990(b)	213	193	184	193	189	190	213	195	198
1991(c)	214	212	186	202	202	206	182	217	206
1992	232	213	201	205	199	194	252	204	214
1993	241	220	206	241	224	207	243	254	227
1994	237	231	216	230	229	208	259	236	230
1995	238	229	216	245	220	229	228	261	231
1997	262	244	258	253	224	247	233	263	252
<i>Total -</i>									
1988	405	393	372	375	393	371	458	453	394
1989	433	419	407	401	434	393	510	479	423
1990(b)	459	444	417	428	440	419	512	518	444
1991(c)	481	463	434	434	469	432	504	550	464
1992	491	469	451	445	485	436	531	559	475
1993	525	498	470	476	513	450	561	585	503
1994	527	526	493	488	539	461	585	580	519
1995	555	531	498	499	531	501	546	601	532
1997	613	577	561	537	589	510	611	675	585

(a) This survey was not conducted in August 1996. (b) The August 1990 survey excluded all persons aged 70 and over. (c) The 1991 survey was conducted in July.

TABLE 2. WEEKLY EARNINGS IN ALL JOBS OF FULL-TIME AND PART-TIME WORKERS

	Full-time workers			Part-time workers			Total		
	Males	Females	Persons	Males	Females	Persons	Males	Females	Persons
	— '000 —								
<i>Weekly earnings in all jobs (\$) —</i>									
Under 80	19.0	9.6	28.6	113.9	197.0	310.9	132.9	206.6	339.5
80 and under 160	18.0	12.4	30.3	101.2	236.5	337.7	119.1	248.9	368.0
160 and under 200	21.6	13.4	35.0	28.6	99.7	128.3	50.2	113.1	163.3
200 and under 240	32.4	17.8	50.2	31.4	113.8	145.2	63.8	131.6	195.4
240 and under 280	46.5	32.5	78.9	29.4	116.5	145.9	75.9	149.0	224.8
280 and under 320	50.7	38.3	89.1	26.3	104.9	131.1	77.0	143.2	220.2
320 and under 360	67.7	63.0	130.8	21.6	100.9	122.5	89.3	163.9	253.2
360 and under 400	76.0	78.3	154.3	13.0	69.9	82.9	89.0	148.2	237.2
400 and under 440	180.4	144.9	325.3	17.7	71.7	89.4	198.1	216.6	414.7
440 and under 480	200.2	158.3	358.5	10.3	40.5	50.8	210.6	198.8	409.3
480 and under 520	281.3	170.4	451.7	8.7	42.5	51.2	290.0	212.9	502.9
520 and under 560	218.3	138.1	356.4	*3.1	19.9	23.1	221.5	158.0	379.5
560 and under 600	123.6	90.3	213.9	*1.6	11.3	12.9	125.2	101.6	226.8
600 and under 640	225.0	134.8	359.8	*3.3	17.0	20.3	228.2	151.9	380.1
640 and under 680	156.7	83.9	240.7	*1.3	8.4	9.7	158.0	92.4	250.4
680 and under 720	188.1	75.8	263.9	*1.1	8.0	9.1	189.2	83.7	273.0
720 and under 760	147.3	71.7	219.0	*2.3	*4.7	7.1	149.7	76.4	226.1
760 and under 800	75.1	41.2	116.2	*0.3	*4.4	*4.7	75.4	45.6	120.9
800 and under 840	149.6	57.9	207.5	*0.2	*3.7	*3.9	149.8	61.6	211.4
840 and under 880	103.2	44.9	148.1	*0.6	*2.3	*2.9	103.8	47.2	151.0
880 and under 920	113.6	52.9	166.4	*1.9	*1.8	*3.7	115.4	54.7	170.1
920 and under 960	60.6	22.6	83.3	*1.1	*1.5	*2.6	61.7	24.1	85.8
960 and under 1000	47.8	16.6	64.4	*1.5	*0.4	*1.9	49.3	17.0	66.3
1000 and under 1040	98.9	28.4	127.3	*0.8	*1.9	*2.7	99.7	30.3	130.0
1040 and under 1080	37.9	14.9	52.7	*0.5	*0.7	*1.2	38.4	15.6	53.9
1080 and over	424.8	67.2	492.0	*3.8	*4.2	8.0	428.6	71.4	500.0
Could not be determined(a)	227.5	105.1	332.7	20.5	65.1	85.5	248.0	170.2	418.2
Total	3,391.9	1,785.0	5,176.8	445.9	1,349.4	1,795.3	3,837.7	3,134.4	6,972.1
	-- \$ --								
Median weekly earnings in all jobs	602	530	578	145	218	203	570	409	499
Mean weekly earnings in all jobs	753	608	703	231	258	252	691	457	585

(a) See paragraphs 15 and 16 of the Explanatory Notes.

TABLE 3. WEEKLY EARNINGS IN ALL JOBS OF FULL-TIME AND PART-TIME WORKERS

	<i>Husband or wife</i>		<i>Lone parent</i>		<i>Total</i>	<i>Other</i>		<i>Total</i>	
	<i>With children under 15 present</i>	<i>Without children under 15 present</i>	<i>With children under 15 present</i>	<i>Without children under 15 present</i>		<i>family person(a)</i>	<i>Non-family member(b)</i>		
FULL-TIME WORKERS									
— '000 —									
<i>Weekly earnings in all jobs (\$) —</i>									
Under 80	6.1	9.2	15.4	*0.9	*0.0	*0.9	*4.9	7.5	28.6
80 and under 160	8.0	9.7	17.7	*0.1	*0.0	*0.1	9.5	*3.0	30.3
160 and under 200	6.6	*4.7	11.3	*0.4	*0.0	*0.4	18.6	*4.6	35.0
200 and under 240	8.7	10.9	19.6	*0.0	*0.9	*0.9	24.5	5.2	50.2
240 and under 280	12.0	15.3	27.3	*0.8	*0.6	*1.4	37.1	13.2	78.9
280 and under 320	14.3	16.3	30.6	*1.0	*0.1	*1.1	39.8	17.6	89.1
320 and under 360	27.4	27.0	54.4	*1.2	*1.2	*2.4	46.2	27.7	130.8
360 and under 400	32.1	43.6	75.7	*2.3	*1.5	*3.8	45.2	29.6	154.3
400 and under 440	79.4	92.7	172.1	6.5	8.6	15.1	75.7	62.4	325.3
440 and under 480	87.8	109.6	197.4	6.2	7.3	13.5	77.1	70.5	358.5
480 and under 520	124.7	134.9	259.7	6.2	9.9	16.1	78.2	97.7	451.7
520 and under 560	104.7	96.9	201.6	7.0	7.8	14.8	59.5	80.5	356.4
560 and under 600	52.2	66.2	118.4	6.8	*2.9	9.7	32.2	53.5	213.9
600 and under 640	108.0	118.6	226.6	7.8	5.3	13.2	45.7	74.3	359.8
640 and under 680	74.1	73.0	147.1	*3.3	*3.4	6.7	29.8	57.0	240.7
680 and under 720	86.8	86.5	173.3	*4.9	*3.1	8.0	24.0	58.6	263.9
720 and under 760	66.3	74.0	140.3	*1.6	*3.7	5.3	21.3	52.2	219.0
760 and under 800	33.8	41.9	75.7	*1.8	*3.0	*4.8	8.6	27.1	116.2
800 and under 840	81.2	66.1	147.3	*3.5	*4.4	7.9	13.2	39.1	207.5
840 and under 880	53.7	49.8	103.5	*2.3	*2.0	*4.3	9.1	31.2	148.1
880 and under 920	62.7	57.6	120.2	*4.5	*3.5	8.0	9.1	29.1	166.4
920 and under 960	32.8	32.7	65.5	*0.9	*2.0	*2.9	*2.7	12.3	83.3
960 and under 1000	26.2	20.4	46.6	*2.0	*1.0	*3.0	*3.0	11.8	64.4
1000 and under 1040	51.0	45.6	96.5	*1.1	*2.0	*3.1	6.6	21.0	127.3
1040 and under 1080	20.8	18.3	39.1	*0.1	*2.6	*2.7	*0.6	10.4	52.7
1080 and over	194.0	187.0	380.9	*3.4	5.7	9.1	17.6	84.3	492.0
Could not be determined(c)	90.3	114.6	204.9	*4.5	*4.5	9.0	58.4	60.4	332.7
<i>Total</i>	<i>1,545.7</i>	<i>1,623.0</i>	<i>3,168.7</i>	<i>81.2</i>	<i>86.9</i>	<i>168.0</i>	<i>798.2</i>	<i>1,041.9</i>	<i>5,176.8</i>
— \$ —									
Median weekly earnings in all jobs	642	599	611	577	571	574	456	578	578
Mean weekly earnings in all jobs	769	750	759	652	680	666	504	687	703
PART-TIME WORKERS									
— '000 —									
<i>Weekly earnings in all jobs (\$) —</i>									
Under 40	9.2	11.2	20.4	*1.9	*1.3	*3.3	74.7	12.5	110.8
40 and under 80	29.3	23.4	52.7	11.3	*1.0	12.3	112.9	22.2	200.1
80 and under 120	32.8	27.8	60.6	11.5	*2.2	13.7	82.7	24.7	181.7
120 and under 160	39.8	28.3	68.1	9.4	*1.9	11.3	52.4	24.2	156.0
160 and under 200	39.7	28.7	68.5	9.7	*2.5	12.2	29.1	18.6	128.3
200 and under 240	49.2	38.2	87.3	5.3	*1.4	6.7	29.2	22.0	145.2
240 and under 280	54.7	38.3	93.0	9.0	*2.2	11.2	22.1	19.5	145.9
280 and under 320	50.0	33.5	83.6	6.6	*2.0	8.6	19.2	19.8	131.1
320 and under 360	40.2	41.9	82.1	5.6	*1.9	7.6	13.3	19.6	122.5
360 and under 400	31.0	29.4	60.5	*4.1	*1.4	5.4	6.3	10.7	82.9
400 and under 440	34.8	32.2	66.9	*3.8	*2.0	5.9	6.6	10.0	89.4
440 and under 480	20.0	15.1	35.1	*1.4	*1.1	*2.5	*5.0	8.2	50.8
480 and under 520	21.1	15.3	36.4	*3.0	*1.7	*4.7	*2.9	7.2	51.2
520 and under 560	11.2	6.0	17.2	*1.2	*0.0	*1.2	*0.3	*4.4	23.1
560 and under 600	6.1	*4.7	10.8	*0.8	*0.2	*1.0	*0.6	*0.5	12.9
600 and under 640	9.0	6.6	15.6	*0.7	*0.6	*1.3	*0.6	*2.8	20.3
640 and over	25.3	20.9	46.2	*1.9	*0.8	*2.7	*1.9	6.7	57.5
Could not be determined(c)	26.2	24.2	50.4	*2.8	*0.5	*3.3	18.8	13.0	85.5
<i>Total</i>	<i>529.8</i>	<i>425.6</i>	<i>955.4</i>	<i>90.1</i>	<i>24.8</i>	<i>114.9</i>	<i>478.6</i>	<i>246.4</i>	<i>1,795.3</i>
— \$ —									
Median weekly earnings in all jobs	257	261	258	187	262	205	88	205	203
Mean weekly earnings in all jobs	307	305	306	235	288	247	145	252	252

TABLE 3. WEEKLY EARNINGS IN ALL JOBS OF FULL-TIME AND PART-TIME WORKERS—continued

	Husband or wife		Lone parent		Total	Other family person(a)	Non-family member(b)	Total	
	With children under 15 present	Without children under 15 present	With children under 15 present	Without children under 15 present					
— '000 —									
<i>Weekly earnings in all jobs (\$) —</i>									
Under 80	44.6	43.9	88.4	14.1	*2.3	16.4	192.5	42.2	339.5
80 and under 160	80.7	65.8	146.4	20.9	*4.1	25.1	144.6	51.9	368.0
160 and under 200	46.4	33.4	79.8	10.1	*2.5	12.6	47.7	23.2	163.2
200 and under 240	57.9	49.1	107.0	5.3	*2.2	7.5	53.7	27.2	195.4
240 and under 280	66.7	53.5	120.3	9.8	*2.8	12.6	59.2	32.7	224.8
280 and under 320	64.3	49.8	114.2	7.6	*2.1	9.7	58.9	37.4	220.2
320 and under 360	67.6	68.9	136.4	6.8	*3.1	10.0	59.5	47.3	253.2
360 and under 400	63.1	73.1	136.2	6.4	*2.8	9.2	51.6	40.3	237.2
400 and under 440	114.2	124.9	239.1	10.4	10.6	21.0	82.3	72.3	414.7
440 and under 480	107.8	124.7	232.5	7.6	8.4	16.0	82.1	78.7	409.2
480 and under 520	145.9	150.2	296.1	9.3	11.6	20.9	81.1	104.9	502.5
520 and under 560	115.9	102.8	218.8	8.2	7.8	16.0	59.8	84.9	379.5
560 and under 600	58.3	70.9	129.2	7.7	*3.1	10.8	32.8	54.0	226.8
600 and under 640	117.0	125.2	242.2	8.5	6.0	14.4	46.4	77.1	380.1
640 and under 680	78.2	75.8	154.0	*4.1	*3.9	8.0	29.8	58.6	250.4
680 and under 720	90.2	91.3	181.5	*4.9	*3.1	8.0	24.4	59.0	273.0
720 and under 760	70.4	75.6	146.0	*1.6	*3.7	5.3	22.0	52.8	226.1
760 and under 800	35.3	44.2	79.4	*1.8	*3.0	*4.8	8.7	27.9	120.9
800 and under 840	83.6	67.3	150.9	*3.8	*4.4	8.2	13.2	39.1	211.4
840 and under 880	54.7	50.6	105.3	*2.7	*2.0	*4.7	9.1	31.9	151.0
880 and under 920	64.3	59.1	123.4	*4.5	*3.8	8.3	9.1	29.3	170.1
920 and under 960	33.3	33.9	67.2	*0.9	*2.0	*2.9	*2.8	12.9	85.8
960 and under 1000	26.7	21.8	48.5	*2.0	*1.0	*3.0	*3.0	11.8	66.3
1000 and under 1040	51.9	46.9	98.8	*1.1	*2.0	*3.1	6.7	21.4	130.0
1040 and under 1080	21.6	18.7	40.3	*0.1	*2.6	*2.7	*0.6	10.4	53.9
1080 and over	198.4	188.5	386.9	*3.8	5.8	9.6	18.0	85.5	500.0
Could not be determined(c)	116.5	138.8	255.3	7.3	*5.0	12.3	77.2	73.5	418.2
Total	2,075.4	2,048.7	4,124.1	171.3	111.7	282.9	1,276.7	1,288.3	6,972.1
— \$ —									
Median weekly earnings in all jobs	543	537	540	378	508	448	320	518	499
Mean weekly earnings in all jobs	650	657	653	430	591	493	366	604	585

(a) Includes persons who were a dependent student, non-dependent child or other family member. (b) Includes persons for whom relationship in household could not be determined. (c) See paragraphs 15 and 16 of the Explanatory Notes.

TABLE 4. MEAN WEEKLY EARNINGS OF FULL-TIME AND PART-TIME EMPLOYEES IN MAIN JOB
(S)

	Full-time employees			Part-time employees			Total		
	Males	Females	Persons	Males	Females	Persons	Males	Females	Persons
<i>Age group (years) —</i>									
15 — 19	330	329	330	142	102	119	224	158	191
20 — 24	545	492	522	248	217	229	477	389	434
25 — 34	712	633	684	323	288	296	680	508	604
35 — 44	834	652	777	352	317	321	805	488	661
45 — 54	859	650	789	349	315	320	825	502	677
55 — 59	852	668	801	308	279	287	792	489	675
60 — 64	735	546	700	306	266	282	663	383	576
65 and over	712	498	662	236	175	214	485	291	425
<i>Relationship in household —</i>									
With children under 15 present	812	612	765	336	296	301	783	420	628
Without children under 15 present	717	605	673	239	242	241	635	464	556
<i>Birthplace —</i>									
Born in Australia	743	603	695	249	255	253	672	442	566
Born outside Australia	779	616	725	276	299	293	728	482	621
Born in main English speaking countries	883	684	818	263	314	304	831	517	691
Born in other countries	698	566	654	283	285	285	651	454	567
<i>Industry —</i>									
Agriculture, forestry and fishing	505	401	488	308	208	256	471	297	426
Mining	1,191	*824	1,163	*1,253	*506	*703	1,192	750	1,149
Manufacturing	689	552	662	332	287	304	670	481	624
Electricity, gas and water supply	856	656	836	*481	*465	*475	847	633	824
Construction	700	513	687	323	298	312	674	421	646
Wholesale trade	717	577	682	318	286	297	689	489	627
Retail trade	566	471	532	178	174	175	428	267	342
Accommodation, cafes and restaurants	567	470	527	212	200	204	427	289	349
Transport and storage	833	614	787	369	300	340	791	548	734
Communication services	827	618	764	*274	293	286	798	556	717
Finance and insurance	1,008	656	834	*408	333	340	984	561	742
Property and business services	913	637	806	270	294	287	828	513	682
Government administration and defence	809	697	766	303	313	311	789	601	705
Education	857	713	770	357	317	324	772	551	622
Health and community services	788	628	678	289	351	347	708	484	531
Cultural and recreational services	743	590	680	241	222	229	607	401	501
Personal and other services	706	524	641	181	208	202	645	387	524
<i>Occupation —</i>									
Managers and administrators	1,085	938	1,057	365	432	412	1,069	841	1,018
Professionals	970	771	884	377	412	407	928	643	779
Associate professionals	798	664	756	279	313	305	773	576	700
Tradespersons and related workers	640	426	627	435	262	354	631	364	607
Advanced clerical and service workers	778	561	592	*371	325	327	732	481	508
Intermediate clerical, sales and service workers	692	523	588	247	260	258	617	404	466
Intermediate production and transport workers	677	469	657	263	209	243	625	353	585
Elementary clerical, sales and service workers	567	475	522	163	174	171	385	262	305
Labourers and related workers	552	420	521	240	202	219	458	283	394
<i>Permanent or casual employees —</i>									
Permanent	764	616	713	322	349	345	752	544	665
Casual	656	510	613	240	206	218	433	253	332
<i>Sector —</i>									
Public	825	697	769	315	338	334	790	575	678
Private	733	565	681	247	247	247	660	408	551
<i>Size of location (employees) —</i>									
Less than 10	613	495	575	264	234	242	553	353	461
10 — 19	675	573	639	219	242	236	600	412	512
20 — 99	754	620	706	238	269	261	681	463	580
100 or more	873	671	802	289	316	310	829	544	704
Don't know	643	551	620	252	209	225	528	323	442
Total	752	606	702	254	264	261	685	451	579

TABLE 5. SELECTED CHARACTERISTICS OF FULL-TIME AND PART-TIME EMPLOYEES IN MAIN JOB ('000)

	<i>Full-time employees</i>			<i>Part-time employees</i>			<i>Total</i>		
	<i>Males</i>	<i>Females</i>	<i>Persons</i>	<i>Males</i>	<i>Females</i>	<i>Persons</i>	<i>Males</i>	<i>Females</i>	<i>Persons</i>
<i>Age group (years) —</i>									
15 — 19	121.1	67.4	188.4	151.0	201.9	352.9	272.1	269.3	541.3
20 — 24	353.8	272.6	626.3	106.8	159.7	266.5	460.6	432.2	892.8
25 — 34	955.3	525.0	1,480.3	85.6	291.9	377.6	1,040.9	816.9	1,857.8
35 — 44	912.4	417.9	1,330.3	56.8	391.2	448.0	969.2	809.0	1,778.2
45 — 54	703.8	350.3	1,054.1	51.5	275.2	326.7	755.3	625.5	1,380.8
55 — 59	185.6	65.4	251.1	20.8	56.7	77.6	206.5	122.2	328.6
60 — 64	81.3	17.9	99.2	15.2	25.6	40.8	96.6	43.4	140.0
65 and over	20.5	5.6	26.1	16.1	10.2	26.4	36.6	15.9	52.5
<i>Relationship in household —</i>									
With children under 15 present	1,216.7	376.6	1,593.3	77.6	575.8	653.4	1,294.4	952.4	2,246.7
Without children under 15 present	2,117.0	1,345.5	3,462.5	426.4	836.6	1,262.9	2,543.4	2,182.0	4,725.4
<i>Birthplace —</i>									
Born in Australia	2,480.6	1,309.5	3,790.1	409.9	1,110.5	1,520.4	2,890.5	2,420.0	5,310.5
Born outside Australia	853.2	412.5	1,265.7	94.0	301.9	395.9	947.2	714.4	1,661.6
Born in main English speaking countries	373.0	175.4	548.5	33.7	145.3	179.0	406.7	320.7	727.5
Born in other countries	480.1	237.1	717.2	60.3	156.6	216.9	540.4	393.7	934.1
<i>Industry —</i>									
Agriculture, forestry and fishing	95.8	18.3	114.1	19.7	22.3	42.0	115.5	40.6	156.1
Mining	68.0	5.7	73.7	*1.0	*1.5	*2.6	69.0	7.3	76.3
Manufacturing	742.3	184.6	926.9	40.1	67.0	107.1	782.4	251.7	1,034.1
Electricity, gas and water supply	59.2	6.9	66.0	*1.4	*0.9	*2.2	60.6	7.7	68.3
Construction	285.0	21.6	306.6	20.3	16.5	36.8	305.3	38.1	343.4
Wholesale trade	281.4	94.0	375.4	20.2	39.7	59.9	301.6	133.7	435.3
Retail trade	307.0	170.4	477.4	162.3	358.2	520.5	469.2	528.6	997.8
Accommodation, cafes and restaurants	92.6	65.1	157.7	57.8	129.8	187.7	150.4	195.0	345.4
Transport and storage	216.8	57.0	273.8	21.1	15.8	36.9	237.9	72.7	310.7
Communication services	87.8	37.9	125.7	*4.6	9.2	13.8	92.3	47.1	139.4
Finance and insurance	125.6	119.7	245.4	5.8	50.7	56.5	131.4	170.4	301.9
Property and business services	340.3	214.1	554.4	51.2	118.0	169.2	391.5	332.1	723.7
Government administration and defence	175.7	114.2	289.9	7.1	37.5	44.6	182.8	151.6	334.4
Education	154.9	228.5	383.4	31.0	160.2	191.2	185.9	388.7	574.6
Health and community services	127.2	273.8	401.0	24.0	293.8	317.8	151.2	567.6	718.8
Cultural and recreational services	56.0	40.6	96.6	21.2	41.2	62.4	77.2	81.8	159.0
Personal and other services	118.2	69.7	187.9	15.2	49.9	65.1	133.4	119.7	253.0
<i>Occupation —</i>									
Managers and administrators	277.5	66.9	344.4	6.1	14.9	21.0	283.7	81.8	365.5
Professionals	582.1	432.2	1,014.3	44.1	241.0	285.1	626.3	673.1	1,299.4
Associate professionals	421.0	194.8	615.8	20.6	65.3	85.9	441.6	260.1	701.7
Tradespersons and related workers	740.7	48.7	789.3	33.5	28.3	61.9	774.2	77.0	851.2
Advanced clerical and service workers	31.6	187.1	218.7	*3.7	95.1	98.8	35.3	282.2	317.5
Intermediate clerical, sales and service workers	306.8	487.9	794.7	61.9	399.3	461.2	368.7	887.2	1,255.8
Intermediate production and transport workers	489.3	51.5	540.8	71.8	41.4	113.2	561.2	92.9	654.0
Elementary clerical, sales and service workers	155.9	151.2	307.1	121.5	356.4	477.9	277.4	507.6	785.0
Labourers and related workers	328.9	101.8	430.7	140.6	170.8	311.4	469.5	272.5	742.0
<i>Permanent or casual employees —</i>									
Permanent	2,950.4	1,567.0	4,517.4	85.9	573.4	659.3	3,036.3	2,140.4	5,176.6
Casual	383.4	155.1	538.4	418.1	838.9	1,257.1	801.5	994.0	1,795.5
<i>Sector —</i>									
Public	687.2	532.8	1,220.0	50.4	271.8	322.2	737.6	804.6	1,542.2
Private	2,646.5	1,189.3	3,835.8	453.6	1,140.6	1,594.2	3,100.1	2,329.8	5,430.0
<i>Size of location (employees) —</i>									
Less than 10 employees	778.8	354.1	1,133.0	153.1	418.4	571.6	932.0	772.6	1,704.5
10 — 19	403.3	221.5	624.8	77.8	205.3	283.1	481.1	426.8	907.8
20 — 99	838.1	458.2	1,296.4	136.0	366.1	502.1	974.1	824.3	1,798.4
100 or more	1,210.5	650.7	1,861.2	97.4	358.5	455.9	1,308.0	1,009.2	2,317.1
Don't know	103.0	37.4	140.4	39.6	64.1	103.8	142.6	101.6	244.2
Total	3,333.8	1,722.0	5,055.8	504.0	1,412.4	1,916.4	3,837.7	3,134.4	6,972.1

TABLE 6. WEEKLY EARNINGS OF EMPLOYEES IN MAIN JOB BY HOURS PAID

	1-19	20-29	30-34	35-39	40	41-44	45-48	49 and over	Total(a)
MALES									
— '000 —									
<i>Weekly earnings in main job (\$) —</i>									
Under 80	115.2	*3.8	*1.7	*5.0	*4.5	*1.9	*1.7	*3.6	137.3
80 and under 160	99.1	9.1	*1.6	*2.5	*3.5	*1.1	*0.7	*4.9	122.5
160 and under 200	28.9	5.7	*2.1	5.5	6.4	*0.9	*1.5	*1.1	52.0
200 and under 240	18.8	13.2	*2.9	10.9	11.3	*0.5	*2.8	*4.5	65.0
240 and under 280	15.0	22.4	*4.6	14.0	11.6	*2.2	*1.8	6.1	78.1
280 and under 320	7.9	19.1	8.6	15.2	13.0	*0.6	*4.0	9.2	77.7
320 and under 360	6.3	14.4	8.1	24.1	22.5	*4.1	*2.7	7.9	90.1
360 and under 400	*2.4	12.6	6.3	38.4	20.7	*1.8	*2.9	5.5	90.6
400 and under 440	6.9	12.4	11.2	81.3	59.0	6.8	7.3	17.9	203.1
440 and under 480	6.2	6.8	9.1	87.4	66.2	10.8	9.8	13.4	209.7
480 and under 520	5.6	7.8	8.8	112.6	89.6	17.4	21.1	28.8	291.8
520 and under 560	*4.6	*3.1	7.2	93.3	68.7	15.3	14.2	16.9	223.3
560 and under 600	*2.9	*2.7	*1.1	54.2	34.7	10.2	11.2	10.1	127.0
600 and under 640	*3.4	*4.0	5.2	78.1	69.4	20.1	18.7	29.5	228.6
640 and under 680	*1.7	5.9	*3.9	54.0	40.4	13.2	13.4	22.8	155.5
680 and under 720	*3.3	*3.3	*4.7	60.9	44.4	13.5	26.0	33.4	189.5
720 and under 760	*4.6	*3.7	*2.6	52.4	33.0	11.4	18.0	22.2	147.7
760 and under 800	*0.8	*2.4	*1.0	29.9	15.9	*4.4	6.2	12.1	72.7
800 and under 840	*3.3	*4.5	5.2	44.4	27.6	12.5	20.9	30.4	148.8
840 and under 880	*4.2	*2.8	*1.7	33.7	19.3	5.7	15.3	19.0	101.7
880 and under 920	*2.8	*2.4	*2.5	38.7	18.1	9.0	15.7	25.8	115.0
920 and under 960	*2.0	*1.6	*1.8	20.1	9.5	5.5	6.5	14.3	61.2
960 and under 1000	*1.4	*1.4	*0.9	16.2	9.0	*2.8	6.8	11.6	50.2
1000 and under 1040	*2.7	*1.2	*1.3	25.8	19.6	6.2	14.5	29.6	100.8
1040 and under 1080	*1.1	*1.1	*0.8	13.4	5.3	*1.9	6.1	6.7	36.4
1080 and over	8.9	12.3	7.1	101.7	54.2	28.1	55.0	152.7	420.0
Could not be determined(b)	*0.5	*1.2	..	*3.9	*2.8	*0.6	*0.1	*3.7	241.6
<i>Total</i>	<i>360.6</i>	<i>180.9</i>	<i>111.7</i>	<i>1,117.8</i>	<i>780.3</i>	<i>208.2</i>	<i>304.9</i>	<i>543.7</i>	<i>3,837.7</i>
— \$ —									
Median weekly earnings in main job	123	358	479	591	572	668	751	821	570
Mean weekly earnings in main job	256	488	554	691	642	769	875	978	685
FEMALES									
— '000 —									
<i>Weekly earnings in main job (\$) —</i>									
Under 80	203.4	*2.7	*1.9	*4.0	*2.9	*0.0	*0.2	*0.7	215.7
80 and under 160	233.2	11.3	*2.5	*2.7	*1.3	*0.4	*0.0	*2.9	254.3
160 and under 200	96.1	11.2	*2.9	*3.9	*1.2	*0.3	*0.4	*1.5	117.4
200 and under 240	79.2	39.3	*4.4	5.7	*3.9	*0.6	*0.3	*2.1	135.4
240 and under 280	61.5	69.2	6.1	10.7	6.4	*0.6	*2.4	*0.8	157.6
280 and under 320	31.3	67.7	17.1	13.2	11.0	*0.8	*2.0	*1.8	145.0
320 and under 360	23.0	66.4	25.3	31.6	13.5	*1.7	*0.9	*2.1	164.5
360 and under 400	14.9	40.1	24.5	43.1	17.6	*2.0	*1.8	*2.2	146.3
400 and under 440	14.4	37.9	31.8	84.7	33.6	*4.5	*3.0	5.4	215.2
440 and under 480	12.0	23.4	21.1	79.9	44.5	9.8	*4.2	*3.8	198.9
480 and under 520	12.5	21.6	16.4	89.7	52.8	7.0	*4.8	10.8	215.6
520 and under 560	*4.7	10.4	11.8	72.6	36.9	6.3	7.6	*3.9	154.2
560 and under 600	6.2	6.2	8.7	51.5	16.1	5.9	*2.0	*2.6	99.1
600 and under 640	6.8	10.8	8.3	71.9	33.8	6.5	*5.1	7.3	150.7
640 and under 680	*4.1	7.7	5.5	37.3	16.9	*4.8	6.4	5.7	88.3
680 and under 720	*3.3	5.2	6.8	37.5	13.5	*4.1	*4.5	6.5	81.4
720 and under 760	6.2	*3.6	5.4	35.5	14.4	*2.6	*3.6	*4.7	76.0
760 and under 800	*0.8	*2.9	*4.2	22.5	6.6	*1.5	*2.0	*3.3	43.9
800 and under 840	*3.5	*4.8	*4.8	25.1	13.2	*1.8	*4.2	7.1	64.5
840 and under 880	*2.3	*2.8	*2.0	20.8	8.5	*0.8	5.5	*4.4	47.3
880 and under 920	*1.6	*2.0	*2.3	23.2	11.7	*2.7	*5.0	*4.6	53.1
920 and under 960	*0.6	*0.8	*1.4	11.0	*4.3	*0.7	*2.5	*1.2	22.6
960 and under 1000	*0.0	*0.3	*0.4	8.6	*2.1	*0.3	*0.9	*1.6	14.3
1000 and under 1040	*0.4	*1.2	*1.8	12.7	7.5	*1.6	*1.8	*2.7	29.6
1040 and under 1080	*0.3	*0.4	*1.6	6.5	*2.0	*0.4	*1.3	*2.1	14.7
1080 and over	*1.7	*3.4	*1.7	21.2	12.1	*4.6	5.4	17.7	67.8
Could not be determined(b)	*1.2	*0.6	*0.4	*3.2	*0.9	160.8
<i>Total</i>	<i>825.4</i>	<i>453.7</i>	<i>221.2</i>	<i>830.3</i>	<i>389.5</i>	<i>72.2</i>	<i>77.8</i>	<i>109.5</i>	<i>3,134.4</i>
— \$ —									
Median weekly earnings in main job	148	334	425	546	524	574	667	684	409
Mean weekly earnings in main job	190	374	474	591	595	630	705	810	451

TABLE 6. WEEKLY EARNINGS OF EMPLOYEES IN MAIN JOB BY HOURS PAID—continued

	1-19	20-29	30-34	35-39	40	41-44	45-48	49 and over	Total(a)
	PERSONS								
	--- '000 ---								
<i>Weekly earnings in main job (\$)</i> —									
Under 80	318.6	6.5	*3.5	9.0	7.3	*1.9	*1.9	*4.3	353.0
80 and under 160	332.4	20.4	*4.0	5.2	*4.8	*1.5	*0.7	7.7	376.8
160 and under 200	125.0	16.9	*4.9	9.4	7.6	*1.1	*1.8	*2.6	169.5
200 and under 240	98.0	52.5	7.3	16.6	15.2	*1.1	*3.0	6.6	200.4
240 and under 280	76.5	91.6	10.7	24.7	18.0	*2.9	*4.2	6.8	235.7
280 and under 320	39.2	86.8	25.8	28.4	24.1	*1.4	6.1	11.0	222.7
320 and under 360	29.3	80.7	33.4	55.7	36.0	5.8	*3.6	10.0	254.6
360 and under 400	17.3	52.7	30.8	81.5	38.3	*3.8	*4.8	7.7	236.9
400 and under 440	21.3	50.2	43.0	166.1	92.6	11.3	10.3	23.3	418.3
440 and under 480	18.3	30.2	30.2	167.3	110.7	20.6	14.0	17.2	408.5
480 and under 520	18.1	29.4	25.2	202.2	142.5	24.4	25.9	39.6	507.4
520 and under 560	9.3	13.5	19.0	166.0	105.7	21.5	21.8	20.8	377.5
560 and under 600	9.1	8.9	9.8	105.7	50.8	16.0	13.2	12.7	226.2
600 and under 640	10.2	14.8	13.6	150.0	103.3	26.6	23.8	36.9	379.3
640 and under 680	5.8	13.6	9.5	91.3	57.3	17.9	19.8	28.5	243.8
680 and under 720	6.6	8.5	11.4	98.4	57.9	17.6	30.5	39.9	270.9
720 and under 760	10.7	7.2	8.0	87.9	47.4	14.0	21.6	26.9	223.6
760 and under 800	*1.7	5.3	*5.1	52.5	22.5	5.9	8.2	15.4	116.6
800 and under 840	6.8	9.3	10.0	69.5	40.9	14.3	25.1	37.4	213.3
840 and under 880	6.5	5.7	*3.7	54.5	27.8	6.5	20.8	23.4	148.9
880 and under 920	*4.4	*4.4	*4.8	61.8	29.8	11.7	20.7	30.4	168.1
920 and under 960	*2.6	*2.5	*3.2	31.1	13.8	6.2	8.9	15.5	83.8
960 and under 1000	*1.4	*1.7	*1.4	24.8	11.1	*3.1	7.7	13.3	64.4
1000 and under 1040	*3.2	*2.3	*3.1	38.5	27.1	7.8	16.2	32.3	130.4
1040 and under 1080	*1.4	*1.5	*2.4	19.9	7.3	*2.3	7.4	8.8	51.1
1080 and over	10.6	15.7	8.8	122.9	66.3	32.6	60.4	170.5	487.8
Could not be determined(b)	*1.7	*1.8	*0.4	7.1	*3.7	*0.6	*0.1	*3.7	402.4
Total	1,186.0	634.7	332.9	1,948.1	1,169.8	280.5	382.6	653.2	6,972.1
	— \$ —								
Median weekly earnings in main job	143	339	444	571	557	639	731	805	499
Mean weekly earnings in main job	210	407	501	648	626	733	841	949	579

(a) Includes 384,400 employees whose hours paid could not be determined. (b) See paragraphs 15 and 16 of the Explanatory Notes.

TABLE 7. WEEKLY EARNINGS OF FULL-TIME AND PART-TIME EMPLOYEES IN MAIN JOB

	Permanent			Casual			Total		
	Males	Females	Persons	Males	Females	Persons	Males	Females	Persons
FULL-TIME EMPLOYEES									
— '000 —									
<i>Weekly earnings in main job (\$) —</i>									
Under 80	11.3	8.3	19.6	9.0	*1.9	10.9	20.3	10.2	30.5
80 and under 160	9.5	6.1	15.7	9.4	5.4	14.8	18.9	11.5	30.5
160 and under 200	16.7	9.4	26.1	*4.5	5.3	9.9	21.2	14.8	35.9
200 and under 240	19.1	13.8	32.9	10.9	*5.0	15.9	30.0	18.8	48.8
240 and under 280	36.7	22.7	59.4	7.7	7.8	15.6	44.4	30.5	74.9
280 and under 320	36.9	29.4	66.3	12.0	8.5	20.6	48.9	37.9	86.8
320 and under 360	52.7	52.5	105.1	14.0	10.1	24.1	66.7	62.6	129.3
360 and under 400	63.3	65.0	128.3	13.9	8.4	22.3	77.3	73.4	150.7
400 and under 440	149.4	127.5	276.9	28.7	13.5	42.2	178.1	141.0	319.1
440 and under 480	166.2	134.5	300.7	26.2	15.5	41.7	192.3	150.0	342.4
480 and under 520	246.1	155.3	401.4	32.3	15.0	47.2	278.4	170.2	448.6
520 and under 560	200.3	123.3	323.6	16.8	10.6	27.5	217.1	134.0	351.1
560 and under 600	109.0	80.9	189.9	13.4	*4.3	17.8	122.5	85.2	207.7
600 and under 640	202.5	123.3	325.8	19.5	7.8	27.3	222.1	131.0	353.1
640 and under 680	138.5	74.8	213.3	13.7	*2.9	16.6	152.2	77.7	229.9
680 and under 720	169.7	68.1	237.8	15.0	*2.3	17.3	184.7	70.4	255.1
720 and under 760	135.0	64.4	199.4	10.3	*4.0	14.2	145.3	68.4	213.6
760 and under 800	68.7	38.5	107.2	*3.3	*2.2	5.5	72.0	40.7	112.7
800 and under 840	133.1	54.5	187.5	13.8	*3.9	17.7	146.9	58.3	205.3
840 and under 880	95.6	45.6	141.2	*5.1	*0.0	*5.1	100.7	45.6	146.3
880 and under 920	101.0	48.6	149.6	12.7	*1.1	13.9	113.7	49.7	163.5
920 and under 960	57.9	20.8	78.7	*2.5	*0.6	*3.1	60.4	21.4	81.8
960 and under 1000	47.4	13.8	61.2	*2.0	*0.0	*2.0	49.3	13.8	63.1
1000 and under 1040	90.7	25.2	115.9	9.0	*1.6	10.6	99.7	26.7	126.4
1040 and under 1080	35.1	13.0	48.1	*1.1	*1.4	*2.5	36.3	14.4	50.7
1080 and over	375.2	58.3	433.5	39.1	*5.0	44.1	414.2	63.3	477.6
Could not be determined(a)	182.8	89.4	272.3	37.3	10.9	48.2	220.2	100.3	320.5
<i>Total</i>	<i>2,950.4</i>	<i>1,567.0</i>	<i>4,517.4</i>	<i>383.4</i>	<i>155.1</i>	<i>538.4</i>	<i>3,333.8</i>	<i>1,722.0</i>	<i>5,055.8</i>
— \$ —									
Median weekly earnings in main job	628	546	590	503	444	484	605	533	581
Mean weekly earnings in main job	764	616	713	656	510	613	752	606	702
PART-TIME EMPLOYEES									
— '000 —									
<i>Weekly earnings in main job (\$) —</i>									
Under 40	*1.5	*5.1	6.6	46.6	66.2	112.9	48.1	71.4	119.5
40 and under 80	*3.5	6.7	10.3	65.4	127.4	192.8	68.9	134.2	203.1
80 and under 120	6.3	20.8	27.1	53.0	104.8	157.8	59.3	125.6	184.9
120 and under 160	*3.7	28.0	31.7	40.6	89.1	129.7	44.3	117.1	161.4
160 and under 200	*4.8	37.7	42.5	26.0	65.0	91.0	30.9	102.7	133.5
200 and under 240	7.7	50.2	57.8	27.3	66.5	93.8	35.0	116.6	151.6
240 and under 280	8.7	61.7	70.4	25.0	65.4	90.4	33.6	127.1	160.8
280 and under 320	7.2	54.2	61.5	21.6	52.8	74.5	28.9	107.1	135.9
320 and under 360	10.6	60.7	71.3	12.9	41.2	54.1	23.4	101.9	125.4
360 and under 400	5.3	44.9	50.2	8.1	28.0	36.1	13.3	72.9	86.3
400 and under 440	6.6	43.0	49.6	18.5	31.1	49.6	25.1	74.2	99.2
440 and under 480	*3.6	33.2	36.9	13.7	15.6	29.3	17.3	48.8	66.2
480 and under 520	*3.2	29.4	32.6	10.2	16.0	26.2	13.4	45.4	58.8
520 and under 560	*2.5	14.9	17.4	*3.7	5.4	9.0	6.1	20.3	26.4
560 and under 600	*0.4	8.7	9.1	*4.2	5.2	9.4	*4.6	13.9	18.4
600 and under 640	*1.5	12.6	14.2	*5.0	7.0	12.0	6.5	19.6	26.2
640 and over	5.2	35.9	41.1	18.3	17.2	35.5	23.5	53.1	76.6
Could not be determined(a)	*3.5	25.6	29.1	17.9	35.0	52.9	21.4	60.5	82.0
<i>Total</i>	<i>85.9</i>	<i>573.4</i>	<i>659.3</i>	<i>418.1</i>	<i>838.9</i>	<i>1,257.1</i>	<i>504.0</i>	<i>1,412.4</i>	<i>1,916.4</i>
— \$ —									
Median weekly earnings in main job	295	316	311	145	156	150	170	228	214
Mean weekly earnings in main job	322	349	345	240	206	218	254	264	261

TABLE 7. WEEKLY EARNINGS OF FULL-TIME AND PART-TIME EMPLOYEES IN MAIN JOB—continued

	Permanent			Casual			Total		
	Males	Females	Persons	Males	Females	Persons	Males	Females	Persons
	TOTAL								
	— '000 —								
<i>Weekly earnings in main job (\$) —</i>									
Under 80	16.3	20.2	36.5	121.0	195.5	316.5	137.3	215.7	353.0
80 and under 160	19.6	55.0	74.5	103.0	199.3	302.3	122.5	254.3	376.8
160 and under 200	21.5	47.1	68.6	30.6	70.3	100.9	52.0	117.4	169.5
200 and under 240	26.8	64.0	90.7	38.2	71.4	109.6	65.0	135.4	200.4
240 and under 280	45.4	84.4	129.8	32.7	73.2	105.9	78.1	157.6	235.7
280 and under 320	44.1	83.6	127.7	33.7	61.4	95.0	77.7	145.0	222.7
320 and under 360	63.3	113.2	176.4	26.8	51.4	78.2	90.1	164.5	254.6
360 and under 400	68.6	109.9	178.5	22.0	36.4	58.4	90.6	146.3	236.9
400 and under 440	155.9	170.6	326.5	47.2	44.6	91.8	203.1	215.2	418.3
440 and under 480	169.8	167.7	337.5	39.9	31.1	71.0	209.7	198.9	408.5
480 and under 520	249.4	184.7	434.0	42.4	31.0	73.4	291.8	215.6	507.4
520 and under 560	202.8	138.2	341.0	20.5	16.0	36.5	223.3	154.2	377.5
560 and under 600	109.4	89.6	199.0	17.6	9.5	27.2	127.0	99.1	226.2
600 and under 640	204.1	135.9	340.0	24.5	14.8	39.3	228.6	150.7	379.3
640 and under 680	139.3	83.0	222.3	16.2	5.4	21.5	155.5	88.3	243.8
680 and under 720	171.3	76.6	248.0	18.2	*4.8	23.0	189.5	81.4	270.9
720 and under 760	136.2	70.1	206.3	11.5	5.8	17.3	147.7	76.0	223.6
760 and under 800	68.7	40.0	108.7	*4.0	*3.9	8.0	72.7	43.9	116.6
800 and under 840	133.3	57.8	191.1	15.4	6.7	22.2	148.8	64.5	213.3
840 and under 880	95.6	47.0	142.6	6.1	*0.3	6.4	101.7	47.3	148.9
880 and under 920	101.0	50.7	151.7	13.9	*2.4	16.3	115.0	53.1	168.1
920 and under 960	57.9	21.2	79.1	*3.3	*1.3	*4.6	61.2	22.6	83.8
960 and under 1000	48.0	14.2	62.2	*2.1	*0.1	*2.2	50.2	14.3	64.4
1000 and under 1040	90.8	26.3	117.2	10.0	*3.3	13.3	100.8	29.6	130.4
1040 and under 1080	35.2	13.0	48.2	*1.1	*1.7	*2.8	36.4	14.7	51.1
1080 and over	375.7	61.4	437.0	44.3	6.4	50.7	420.0	67.8	487.8
Could not be determined(a)	186.4	115.0	301.4	55.2	45.9	101.1	241.6	160.8	402.4
Total	3,036.3	2,140.4	5,176.6	801.5	994.0	1,795.5	3,837.7	3,134.4	6,972.1
	— \$ —								
Median weekly earnings in main job	611	492	560	299	188	223	570	409	499
Mean weekly earnings in main job	752	544	665	433	253	332	685	451	579

(a) See paragraphs 15 and 16 of the Explanatory Notes.

TABLE 8. WEEKLY EARNINGS OF EMPLOYEES IN MAIN JOB BY OCCUPATION AND SECTOR

	<i>Managers and administrators</i>	<i>Professionals</i>	<i>Associate professionals</i>	<i>Tradespersons and related workers</i>	<i>Advanced clerical and service workers</i>	<i>Intermediate clerical, sales and service workers</i>
FULL-TIME EMPLOYEES						
— '000 —						
<i>Weekly earnings in main job (\$) —</i>						
Under 80	*1.4	*2.2	*3.7	5.4	*1.2	*3.5
80 and under 160	*4.5	*5.0	*3.5	*4.8	*0.4	*5.0
160 and under 200	*1.8	*2.7	*4.7	12.2	*0.6	5.6
200 and under 240	*4.2	*3.3	*3.7	13.4	*0.9	6.4
240 and under 280	*2.4	*4.2	7.7	19.8	*4.3	14.2
280 and under 320	*2.5	6.5	7.7	22.1	5.6	13.4
320 and under 360	*3.4	6.2	7.6	26.9	9.0	27.5
360 and under 400	*3.0	9.6	11.4	26.2	6.5	28.1
400 and under 440	8.9	17.1	29.0	45.4	14.0	58.2
440 and under 480	5.6	21.2	25.6	56.2	16.9	83.0
480 and under 520	12.4	37.4	41.4	77.8	22.6	98.8
520 and under 560	9.3	38.5	40.2	63.7	22.9	77.0
560 and under 600	6.4	33.4	24.2	26.4	14.3	51.2
600 and under 640	13.4	60.3	56.4	56.8	22.4	67.1
640 and under 680	9.8	49.9	30.0	35.5	15.6	40.6
680 and under 720	13.6	55.7	35.4	42.1	10.0	43.1
720 and under 760	11.6	64.5	39.7	32.8	9.5	28.3
760 and under 800	6.8	42.2	16.5	12.7	*3.4	17.3
800 and under 840	13.9	74.8	29.2	28.2	*3.8	15.7
840 and under 880	9.3	59.1	19.8	21.9	*4.9	14.5
880 and under 920	15.8	69.5	22.1	21.0	*1.9	10.2
920 and under 960	7.4	37.6	9.0	7.8	*0.4	8.0
960 and under 1000	7.1	25.3	9.8	8.1	*0.8	*2.9
1000 and under 1040	16.5	45.0	18.1	15.5	*2.2	6.4
1040 and under 1080	9.2	18.5	8.8	*4.9	*1.6	*3.2
1080 and over	106.8	164.4	67.0	54.8	8.0	19.7
Could not be determined(a)	37.4	60.1	43.9	47.0	15.1	45.9
<i>Total</i>	<i>344.4</i>	<i>1,014.3</i>	<i>615.8</i>	<i>789.3</i>	<i>218.7</i>	<i>794.7</i>
Males	277.5	582.1	421.0	740.7	31.6	306.8
Females	66.9	432.2	194.8	48.7	187.1	487.9
— \$ —						
<i>Median weekly earnings —</i>						
Males	854	824	680	560	650	591
Females	788	741	570	407	527	498
Persons	840	788	636	547	543	523
<i>Mean weekly earnings —</i>						
Males	1,085	970	798	640	778	692
Females	938	771	664	426	561	523
Persons	1,057	884	756	627	592	588

TABLE 8. WEEKLY EARNINGS OF EMPLOYEES IN MAIN JOB BY OCCUPATION AND SECTOR —continued

	<i>Intermediate production and transport workers</i>	<i>Elementary clerical, sales and service workers</i>	<i>Labourers and related workers</i>	<i>Public sector</i>	<i>Private sector</i>	<i>Total</i>
FULL-TIME EMPLOYEES						
— '000 —						
<i>Weekly earnings in main job (\$) —</i>						
Under 80	*1.6	*1.4	10.0	*4.0	26.5	30.5
80 and under 160	*1.1	*1.7	*4.4	*1.8	28.7	30.5
160 and under 200	*1.7	*3.2	*3.5	*1.4	34.5	35.9
200 and under 240	*3.8	*4.9	8.2	*4.0	44.7	48.8
240 and under 280	*4.0	8.9	9.4	5.4	69.5	74.9
280 and under 320	8.0	9.0	11.9	8.1	78.8	86.8
320 and under 360	14.0	13.9	20.6	16.8	112.5	129.3
360 and under 400	24.3	15.4	26.2	15.6	135.0	150.7
400 and under 440	40.9	38.1	67.3	43.5	275.6	319.1
440 and under 480	47.6	35.3	51.0	54.8	287.6	342.4
480 and under 520	67.7	38.0	52.5	78.0	370.6	448.6
520 and under 560	41.5	26.2	31.8	85.3	265.8	351.1
560 and under 600	23.7	14.6	13.6	41.7	166.0	207.7
600 and under 640	35.4	21.7	19.8	110.1	243.0	353.1
640 and under 680	22.1	13.7	12.7	67.0	162.9	229.9
680 and under 720	27.3	13.7	14.2	68.6	186.5	255.1
720 and under 760	18.4	*2.9	5.9	80.2	133.5	112.7
760 and under 800	6.5	*2.4	*5.1	37.6	75.1	213.6
800 and under 840	23.0	6.1	10.5	66.2	139.1	205.3
840 and under 880	11.9	*1.5	*3.4	63.2	83.1	146.3
880 and under 920	16.1	*1.7	5.2	63.7	99.8	163.5
920 and under 960	6.7	*0.4	*4.5	36.1	45.7	81.8
960 and under 1000	*4.9	*1.5	*2.7	26.8	36.4	63.1
1000 and under 1040	15.2	*2.6	*5.0	43.2	83.2	126.4
1040 and under 1080	*2.4	*0.6	*1.5	22.9	27.8	50.7
1080 and over	40.9	5.5	10.5	117.0	360.5	477.6
Could not be determined(a)	30.1	21.8	19.1	57.1	263.4	320.5
<i>Total</i>	<i>540.8</i>	<i>307.1</i>	<i>430.7</i>	<i>1,220.0</i>	<i>3,835.8</i>	<i>5,055.8</i>
Males	489.3	155.9	328.9	687.2	2,646.5	3,333.8
Females	51.5	151.2	101.8	532.8	1,189.3	1,722.0
— \$ —						
<i>Median weekly earnings —</i>						
Males	563	511	491	733	583	605
Females	441	444	412	634	499	533
Persons	545	479	462	685	552	581
<i>Mean weekly earnings —</i>						
Males	677	567	552	825	733	752
Females	469	475	420	697	565	606
Persons	657	522	521	769	681	702

TABLE 8. WEEKLY EARNINGS OF EMPLOYEES IN MAIN JOB BY OCCUPATION AND SECTOR —continued

	Managers and administrators	Professionals	Associate professionals	Tradespersons and related workers	Advanced clerical and service workers	Intermediate clerical, sales and service workers
TOTAL						
— '000 —						
<i>Weekly earnings in main job (\$) —</i>						
Under 80	*3.6	20.8	12.3	11.2	6.0	53.4
80 and under 160	7.1	30.1	14.9	13.6	8.6	84.2
160 and under 200	*2.3	13.6	10.0	16.5	7.4	42.7
200 and under 240	5.6	15.6	9.4	17.3	9.6	48.5
240 and under 280	*2.8	22.3	18.2	24.7	16.6	58.7
280 and under 320	*3.9	21.6	13.0	27.1	15.3	57.5
320 and under 360	5.4	28.8	14.5	30.2	15.8	68.8
360 and under 400	*4.1	25.1	16.2	30.1	15.6	54.2
400 and under 440	10.3	38.8	35.4	50.2	22.5	84.2
440 and under 480	6.8	37.3	30.3	60.8	21.2	103.3
480 and under 520	13.8	58.2	44.5	79.3	26.8	112.0
520 and under 560	10.0	50.8	42.4	64.8	24.0	82.8
560 and under 600	6.7	40.1	24.8	27.6	16.9	53.5
600 and under 640	13.5	74.6	57.0	57.9	24.9	69.9
640 and under 680	9.8	59.1	31.5	35.8	16.9	40.6
680 and under 720	13.6	62.7	35.9	44.1	11.8	43.8
720 and under 760	11.6	72.4	39.7	32.8	9.9	29.3
760 and under 800	6.8	44.3	16.7	12.7	*3.4	18.1
800 and under 840	14.2	80.0	29.2	29.1	*3.8	16.1
840 and under 880	9.7	61.1	20.1	21.9	*4.9	14.5
880 and under 920	16.1	72.2	22.1	21.0	*1.9	10.6
920 and under 960	7.7	38.5	9.4	7.8	*0.4	8.3
960 and under 1000	7.1	26.4	10.0	8.1	*0.8	*2.9
1000 and under 1040	16.5	46.6	18.3	15.9	*2.8	6.6
1040 and under 1080	9.5	18.6	8.8	*4.9	*1.6	*3.2
1080 and over	108.1	167.1	67.9	56.9	8.4	20.6
Could not be determined(a)	38.8	72.9	49.1	49.1	20.2	67.5
Total	365.5	1,299.4	701.7	851.2	317.5	1,255.8
Males	283.7	626.3	441.6	774.2	35.3	368.7
Females	81.8	673.1	260.1	77.0	282.2	887.2
— \$ —						
<i>Median weekly earnings —</i>						
Males	843	808	667	552	603	554
Females	687	603	508	354	457	401
Persons	817	697	594	529	480	447
<i>Mean weekly earnings —</i>						
Males	1,069	928	773	631	732	617
Females	841	643	576	364	481	404
Persons	1,018	779	700	607	508	466

TABLE 8. WEEKLY EARNINGS OF EMPLOYEES IN MAIN JOB BY OCCUPATION AND SECTOR —continued

	<i>Intermediate production and transport workers</i>	<i>Elementary clerical, sales and service workers</i>	<i>Labourers and related workers</i>	<i>Public sector</i>	<i>Private sector</i>	<i>Total</i>
TOTAL						
— '000 —						
<i>Weekly earnings in main job (\$) —</i>						
Under 80	23.2	139.1	83.6	29.0	324.0	353.
80 and under 160	25.5	118.3	74.4	43.4	333.4	376.
160 and under 200	9.2	38.7	29.1	23.1	146.3	169.
200 and under 240	13.4	45.5	35.6	22.6	177.8	200.
240 and under 280	13.1	46.0	33.4	32.9	202.8	235.
280 and under 320	16.2	39.7	28.6	33.7	189.0	222.
320 and under 360	17.8	36.9	36.5	43.8	210.8	254.
360 and under 400	27.9	28.0	35.8	36.2	200.7	236.
400 and under 440	46.8	48.7	81.3	64.8	353.5	418.
440 and under 480	49.4	40.9	58.5	70.7	337.8	408.
480 and under 520	72.5	42.0	58.5	94.4	413.0	507.
520 and under 560	41.6	27.3	33.7	95.2	282.3	377.
560 and under 600	24.7	16.2	15.7	45.8	180.4	226.
600 and under 640	36.5	22.7	22.3	119.2	260.0	379.
640 and under 680	22.7	14.0	13.6	72.0	171.8	243.
680 and under 720	28.5	15.7	14.7	73.6	197.3	270.
720 and under 760	18.6	*3.2	6.1	85.5	138.2	223.
760 and under 800	6.8	*2.4	5.4	38.9	77.8	116.
800 and under 840	23.5	6.4	11.1	69.6	143.7	213.
840 and under 880	11.9	*1.5	*3.4	64.5	84.4	148.
880 and under 920	16.7	*1.9	5.5	64.5	103.5	168.
920 and under 960	6.7	*0.5	*4.5	37.1	46.7	83.
960 and under 1000	*4.9	*1.5	*2.7	27.6	36.8	64.
1000 and under 1040	15.2	*3.4	*5.0	43.8	86.7	130.
1040 and under 1080	*2.4	*0.6	*1.5	22.9	28.2	51.
1080 and over	42.2	5.5	11.0	118.0	369.8	487.
Could not be determined(a)	36.1	38.4	30.4	69.3	333.1	402.
Total	654.0	785.0	742.0	1,542.2	5,430.0	6,972.
Males	561.2	277.4	469.5	737.6	3,100.1	3,837.
Females	92.9	507.6	272.5	804.6	2,329.8	3,134.
— \$ —						
<i>Median weekly earnings —</i>						
Males	528	350	427	698	539	570
Females	367	208	254	545	369	400
Persons	505	249	380	604	462	490
<i>Mean weekly earnings —</i>						
Males	625	385	458	790	660	680
Females	353	262	283	575	408	450
Persons	585	305	394	678	551	570

(a) See paragraphs 15 and 16 of the Explanatory Notes.

TABLE 9. WEEKLY EARNINGS OF EMPLOYEES IN MAIN JOB BY INDUSTRY

	<i>Agri- culture, forestry, and fishing</i>	<i>Mining</i>	<i>Manu- fac- turing</i>	<i>Elec- tricity, gas and water supply</i>	<i>Con- struc- tion</i>	<i>Whole- sale trade</i>	<i>Retail trade</i>	<i>Accommo- dation, cafes and restau- rants</i>	<i>Trans- port and storage</i>
FULL-TIME EMPLOYEES									
— '000 —									
<i>Weekly earnings in main job (\$) —</i>									
Under 80	*2.5	*0.4	*4.5	*0.4	*1.8	*1.8	*2.6	*1.1	*1.3
80 and under 160	5.6	*0.0	*1.6	*0.0	*2.4	*2.7	*3.3	*1.5	*1.2
160 and under 200	*1.9	*0.0	*5.1	*0.0	*2.8	*0.6	7.9	*4.1	*1.0
200 and under 240	5.7	*0.0	6.1	*0.0	5.5	*3.4	6.8	*2.3	*1.4
240 and under 280	6.3	*0.0	7.3	*0.1	8.8	*4.7	15.2	6.6	*1.5
280 and under 320	*3.9	*0.2	12.7	*0.1	7.3	*4.2	17.2	7.6	*2.3
320 and under 360	5.3	*0.5	22.0	*0.7	6.5	11.6	23.6	8.9	6.0
360 and under 400	7.7	*0.2	36.1	*0.2	8.4	9.3	28.7	*4.4	5.2
400 and under 440	14.0	*0.2	69.7	*0.9	14.7	21.8	58.2	15.6	12.3
440 and under 480	10.6	*1.6	73.7	*2.1	16.3	30.3	48.8	12.0	16.8
480 and under 520	12.4	*1.1	97.7	*3.4	29.3	39.8	50.7	22.1	22.5
520 and under 560	6.5	*1.2	70.7	*4.6	17.2	29.5	39.5	10.6	14.3
560 and under 600	*2.9	*0.5	47.4	*4.2	9.5	18.4	18.0	9.3	8.0
600 and under 640	*4.5	*1.5	58.2	6.0	19.7	27.9	27.3	11.6	19.2
640 and under 680	*3.3	*1.8	41.6	*3.0	16.3	18.4	13.0	7.2	13.1
680 and under 720	*2.5	*3.6	50.7	*3.7	17.8	23.0	17.7	8.5	16.5
720 and under 760	*1.6	*1.4	30.9	*3.9	13.2	15.3	11.9	*1.5	15.2
760 and under 800	*0.1	*1.1	19.9	*0.8	5.8	6.5	*4.9	*2.1	5.7
800 and under 840	*2.5	*4.3	36.3	*2.7	14.7	11.9	11.5	*1.8	15.4
840 and under 880	*0.5	*1.9	24.7	*3.4	8.4	7.3	*4.9	*0.7	8.8
880 and under 920	*1.4	*4.3	26.4	*2.5	11.0	10.8	6.1	*1.9	6.1
920 and under 960	*0.5	*2.6	15.9	*2.0	*3.1	*3.9	*2.1	*0.0	*4.5
960 and under 1000	*0.8	*1.7	10.1	*1.5	*3.8	*2.7	*5.7	*0.0	*4.7
1000 and under 1040	*2.3	*2.8	22.7	*2.9	10.9	7.2	*5.1	*1.0	14.9
1040 and under 1080	*0.7	*0.8	6.5	*1.2	*1.3	*2.5	*2.1	*0.9	*2.4
1080 and over	*4.0	33.3	71.8	11.8	29.8	27.5	11.4	*4.7	35.3
Could not be determined(a)	*4.3	6.4	56.9	*3.9	20.4	32.3	36.0	9.5	18.3
<i>Total</i>	<i>114.1</i>	<i>73.7</i>	<i>926.9</i>	<i>66.0</i>	<i>306.6</i>	<i>375.4</i>	<i>477.4</i>	<i>157.7</i>	<i>273.8</i>
<i>Males</i>	<i>95.8</i>	<i>68.0</i>	<i>742.3</i>	<i>59.2</i>	<i>285.0</i>	<i>281.4</i>	<i>307.0</i>	<i>92.6</i>	<i>216.8</i>
<i>Females</i>	<i>18.3</i>	<i>5.7</i>	<i>184.6</i>	<i>6.9</i>	<i>21.6</i>	<i>94.0</i>	<i>170.4</i>	<i>65.1</i>	<i>57.0</i>
— \$ —									
<i>Median weekly earnings —</i>									
<i>Males</i>	<i>450</i>	<i>1016</i>	<i>583</i>	<i>745</i>	<i>596</i>	<i>570</i>	<i>503</i>	<i>506</i>	<i>683</i>
<i>Females</i>	<i>402</i>	<i>643</i>	<i>490</i>	<i>597</i>	<i>462</i>	<i>521</i>	<i>430</i>	<i>455</i>	<i>553</i>
<i>Persons</i>	<i>438</i>	<i>999</i>	<i>562</i>	<i>703</i>	<i>588</i>	<i>557</i>	<i>464</i>	<i>495</i>	<i>657</i>
<i>Mean weekly earnings —</i>									
<i>Males</i>	<i>505</i>	<i>1,191</i>	<i>689</i>	<i>856</i>	<i>700</i>	<i>717</i>	<i>566</i>	<i>567</i>	<i>833</i>
<i>Females</i>	<i>401</i>	<i>*824</i>	<i>552</i>	<i>656</i>	<i>513</i>	<i>577</i>	<i>471</i>	<i>470</i>	<i>614</i>
<i>Persons</i>	<i>488</i>	<i>1,163</i>	<i>662</i>	<i>836</i>	<i>687</i>	<i>682</i>	<i>532</i>	<i>527</i>	<i>787</i>

TABLE 9. WEEKLY EARNINGS OF EMPLOYEES IN MAIN JOB BY INDUSTRY —continued

	Communi- cation services	Finance and insur- ance	Property and business services	Gov- ern- ment adminis- tration and defence	Edu- cation	Health and commu- nity services	Cultural and recrea- tional services	Personal and other services	Total
FULL-TIME EMPLOYEES									
— '000 —									
<i>Weekly earnings in main job (\$) —</i>									
Under 80	*0.4	*0.8	*3.3	*0.5	*0.7	5.3	*0.9	*2.3	30.5
80 and under 160	*0.3	*0.0	*4.7	*0.4	*0.5	*2.2	*1.2	*3.0	30.5
160 and under 200	*0.1	*1.2	*4.2	*0.2	*0.9	*2.6	*0.7	*2.6	35.9
200 and under 240	*0.6	*0.7	6.6	*1.2	*1.1	*4.0	*0.5	*2.8	48.8
240 and under 280	*1.1	*1.8	6.2	*1.0	*3.6	*4.5	*1.7	*4.5	74.9
280 and under 320	*0.8	*1.0	10.8	*2.6	*2.9	5.4	*2.2	5.6	86.8
320 and under 360	*1.0	*4.6	11.6	*3.8	5.5	9.5	*3.3	*5.0	129.3
360 and under 400	*2.3	5.4	12.6	*2.6	6.7	11.6	*2.8	6.4	150.7
400 and under 440	*3.1	9.8	24.3	8.5	11.8	36.1	7.9	10.0	319.1
440 and under 480	*5.1	12.2	32.2	13.4	14.1	34.1	6.8	12.4	342.4
480 and under 520	11.4	23.1	46.9	19.7	16.7	31.1	6.8	13.8	448.6
520 and under 560	10.9	24.6	30.9	27.1	20.0	27.7	7.6	8.3	351.1
560 and under 600	*2.6	10.2	24.1	14.0	13.6	14.6	*3.1	7.4	207.7
600 and under 640	14.5	17.6	38.2	30.4	25.7	29.0	6.7	15.3	353.1
640 and under 680	7.9	14.4	23.5	15.7	16.9	21.7	*5.1	6.9	229.9
680 and under 720	7.7	12.1	27.1	16.3	18.2	15.9	*4.5	9.3	255.1
720 and under 760	7.9	9.6	21.4	19.3	23.3	21.7	*3.8	11.7	213.6
760 and under 800	*4.2	*4.5	16.1	13.5	12.5	8.3	*4.0	*2.6	112.7
800 and under 840	*3.4	6.8	16.6	12.6	35.9	16.7	*3.7	8.4	205.3
840 and under 880	*4.2	*5.1	13.3	10.5	32.3	10.6	*2.2	7.3	146.3
880 and under 920	*3.6	10.8	14.9	10.4	31.7	13.5	*2.8	5.4	163.5
920 and under 960	*2.4	*2.9	5.5	6.1	19.4	7.4	*0.6	*3.1	81.8
960 and under 1000	*3.0	*1.6	6.7	*3.9	10.3	*5.0	*1.3	*3.4	63.1
1000 and under 1040	*4.2	6.5	10.5	7.7	11.9	9.2	*1.1	5.6	126.4
1040 and under 1080	*3.1	*3.3	5.4	6.6	7.0	*3.7	*1.7	*1.4	50.7
1080 and over	13.8	39.4	90.1	29.7	28.7	26.5	8.6	11.1	477.6
Could not be determined(a)	6.1	15.4	46.9	12.3	11.4	23.2	*5.0	12.3	320.5
<i>Total</i>	<i>125.7</i>	<i>245.4</i>	<i>554.4</i>	<i>289.9</i>	<i>383.4</i>	<i>401.0</i>	<i>96.6</i>	<i>187.9</i>	<i>5,055.8</i>
Males	87.8	125.6	340.3	175.7	154.9	127.2	56.0	118.2	3,333.8
Females	37.9	119.7	214.1	114.2	228.5	273.8	40.6	69.7	1,722.0
— \$ —									
<i>Median weekly earnings —</i>									
Males	695	725	675	698	821	617	619	672	605
Females	556	555	545	608	712	552	506	458	533
Persons	653	608	598	658	761	570	572	580	581
<i>Mean weekly earnings —</i>									
Males	827	1,008	913	809	857	788	743	706	752
Females	618	656	637	697	713	628	590	524	606
Persons	764	834	806	766	770	678	680	641	702

TABLE 9. WEEKLY EARNINGS OF EMPLOYEES IN MAIN JOB BY INDUSTRY —continued

	<i>Agri- culture, forestry, and fishing</i>	<i>Mining</i>	<i>Manu- fac- turing</i>	<i>Elec- tricity, gas and water supply</i>	<i>Con- struc- tion</i>	<i>Whole- sale trade</i>	<i>Retail trade</i>	<i>Accommo- dation, cafes and restau- rants</i>	<i>Trans- port and storage</i>
	TOTAL								
— '000 —									
<i>Weekly earnings in main job (\$) —</i>									
Under 80	9.7	*0.4	17.9	*0.4	6.8	5.6	160.6	34.7	*4.1
80 and under 160	13.6	*0.0	15.5	*0.0	8.4	11.3	133.3	52.2	6.8
160 and under 200	*3.4	*0.0	9.7	*0.0	5.3	*3.3	47.5	19.0	*2.9
200 and under 240	10.6	*0.3	13.4	*0.0	8.8	9.8	51.5	18.2	*4.9
240 and under 280	8.8	*0.0	15.0	*1.0	12.0	11.9	53.6	23.0	*4.7
280 and under 320	8.0	*0.2	23.2	*0.1	8.9	9.8	46.6	21.1	*5.0
320 and under 360	7.4	*0.5	29.2	*0.7	7.9	16.3	45.8	21.7	7.4
360 and under 400	8.2	*0.2	42.6	*0.4	9.7	12.5	43.9	9.7	7.5
400 and under 440	15.6	*0.2	80.2	*0.9	17.8	26.3	65.0	21.9	14.9
440 and under 480	13.2	*2.0	78.1	*2.1	16.9	33.7	55.5	18.9	17.1
480 and under 520	14.8	*1.4	102.7	*3.4	30.8	42.1	53.7	24.9	24.9
520 and under 560	6.7	*1.2	71.9	*4.9	17.6	29.8	41.5	12.3	15.1
560 and under 600	*2.9	*0.7	49.2	*4.5	9.9	20.0	19.9	9.9	8.3
600 and under 640	*4.5	*1.5	61.1	6.0	20.3	28.8	28.7	11.9	20.4
640 and under 680	*4.0	*1.8	41.8	*3.0	16.8	18.6	13.6	7.6	13.5
680 and under 720	*3.3	*3.6	51.2	*4.0	19.0	23.4	18.5	8.7	17.3
720 and under 760	*1.6	*1.8	30.9	*3.9	13.4	15.3	12.1	*2.0	15.2
760 and under 800	*0.1	*1.1	20.3	*1.1	6.1	6.5	*4.9	*2.1	5.8
800 and under 840	*3.0	*4.3	37.5	*2.7	15.3	11.9	11.5	*1.8	15.4
840 and under 880	*0.5	*1.9	24.7	*3.4	8.8	7.3	*4.9	*0.7	8.8
880 and under 920	*1.4	*4.3	26.4	*2.5	11.1	10.8	6.1	*1.9	6.7
920 and under 960	*0.5	*2.6	15.9	*2.0	*3.1	*3.9	*2.2	*0.0	*4.5
960 and under 1000	*0.8	*1.7	10.1	*1.5	*3.8	*2.9	*2.7	*0.0	*4.7
1000 and under 1040	*2.3	*2.8	23.4	*2.9	10.9	7.2	5.8	*1.0	15.4
1040 and under 1080	*0.8	*0.8	6.8	*1.2	*1.3	*2.5	*2.1	*0.9	*2.4
1080 and over	*4.2	33.8	72.8	11.8	30.4	27.9	11.9	*4.7	36.1
Could not be determined(a)	6.4	6.9	62.5	*3.9	22.4	35.7	54.3	14.6	21.0
Total	156.1	76.3	1,034.1	68.3	343.4	435.3	997.8	345.4	310.7
Males	115.5	69.0	782.4	60.6	305.3	301.6	469.2	150.4	237.9
Females	40.6	7.3	251.7	7.7	38.1	133.7	528.6	195.0	72.7
— \$ —									
<i>Median weekly earnings —</i>									
Males	426	1016	572	734	585	554	399	404	661
Females	254	586	449	594	400	455	219	251	504
Persons	403	987	536	697	559	520	276	296	602
<i>Mean weekly earnings —</i>									
Males	471	1,192	670	847	674	689	428	427	791
Females	297	750	481	633	421	489	267	289	548
Persons	426	1,149	624	824	646	627	342	349	734

TABLE 9. WEEKLY EARNINGS OF EMPLOYEES IN MAIN JOB BY INDUSTRY —continued

	Communi- cation services	Finance and insur- ance	Property and business services	Gov- ern- ment adminis- tration and defence	Edu- cation	Health and comm- unity services	Cultural and recrea- tional services	Personal and other services	Total
TOTAL									
— '000 —									
<i>Weekly earnings in main job (\$) —</i>									
Under 80	*1.1	*1.2	22.7	5.3	22.5	27.5	15.2	17.4	353.0
80 and under 160	*1.7	*3.5	33.8	8.0	27.3	30.4	14.2	16.9	376.8
160 and under 200	*1.1	6.3	18.5	*3.1	12.8	22.2	*5.0	9.4	169.5
200 and under 240	*1.5	*5.1	21.2	*2.8	12.6	24.4	7.5	7.6	200.4
240 and under 280	*3.4	9.0	20.9	*3.1	20.0	34.2	5.6	9.5	235.7
280 and under 320	*3.5	10.6	19.9	6.7	16.8	28.9	*4.5	8.9	222.7
320 and under 360	*1.7	11.8	21.3	7.3	21.5	36.7	8.2	9.3	254.6
360 and under 400	*2.9	10.3	20.4	6.6	16.7	32.6	*3.5	9.1	236.9
400 and under 440	*4.4	12.8	34.3	10.7	23.2	67.3	10.0	12.7	418.3
440 and under 480	6.4	15.1	38.2	15.8	21.0	50.3	8.8	15.5	408.5
480 and under 520	11.4	24.5	53.4	21.9	29.2	47.4	7.0	14.0	507.4
520 and under 560	10.9	24.7	33.7	28.6	25.1	36.4	8.2	9.0	377.5
560 and under 600	*2.6	10.2	27.8	15.2	14.3	19.5	*3.9	7.4	226.2
600 and under 640	14.5	18.0	40.5	31.3	31.9	36.9	7.6	15.5	379.3
640 and under 680	7.9	14.4	24.3	16.2	19.4	28.0	5.2	7.7	243.8
680 and under 720	7.7	12.1	29.2	16.5	20.8	19.9	6.4	9.3	270.9
720 and under 760	8.1	10.0	22.1	19.6	25.5	26.6	*3.8	11.7	223.6
760 and under 800	*4.2	*4.8	16.5	13.5	13.4	9.6	*4.1	*2.6	116.6
800 and under 840	*3.4	6.8	17.2	12.9	37.5	19.8	*3.7	8.4	213.3
840 and under 880	*4.2	*5.1	13.8	10.8	32.9	11.5	*2.2	7.3	148.9
880 and under 920	*3.6	10.8	15.5	10.8	32.5	15.3	*3.0	5.4	168.1
920 and under 960	*2.5	*3.2	5.9	6.1	20.2	7.6	*0.6	*3.1	83.8
960 and under 1000	*3.0	*1.6	6.9	*4.3	10.8	*5.0	*1.3	*3.4	64.4
1000 and under 1040	*4.2	6.5	10.9	7.7	12.5	10.1	*1.4	5.6	130.4
1040 and under 1080	*3.1	*3.3	5.4	6.6	7.0	*3.7	*1.7	*1.4	51.1
1080 and over	13.8	40.6	92.1	29.7	29.8	28.2	8.9	11.1	487.8
Could not be determined(a)	6.9	19.5	57.3	13.6	17.5	38.9	7.4	13.8	402.4
Total	139.4	301.9	723.7	334.4	574.6	718.8	159.0	253.0	6,972.1
Males	92.3	131.4	391.5	182.8	185.9	151.2	77.2	133.4	3,837.7
Females	47.1	170.4	332.1	151.6	388.7	567.6	81.8	119.7	3,134.4
— \$ —									
<i>Median weekly earnings —</i>									
Males	683	697	604	688	765	572	528	606	570
Females	515	500	458	572	531	426	343	348	409
Persons	614	558	517	611	590	453	427	463	499
<i>Mean weekly earnings —</i>									
Males	798	984	828	789	772	708	607	645	685
Females	556	561	513	601	551	484	401	387	451
Persons	717	742	682	705	622	531	501	524	579

(a) See paragraphs 15 and 16 of the Explanatory Notes.

TABLE 10. WEEKLY EARNINGS OF FULL-TIME EMPLOYEES IN MAIN JOB BY AGE

	15-19	20-24	25-34	35-44	45-54	55-59	60 and over	20 and over	15 and over
MALES									
— '000 —									
<i>Weekly earnings in main job (\$) —</i>									
Under 80	*1.3	*1.6	*3.5	*4.9	6.2	*1.0	*1.8	19.0	20.3
80 and under 160	*3.6	*1.0	*2.4	*4.8	*4.3	*1.1	*1.8	15.3	18.9
160 and under 200	10.2	*2.7	*1.7	*3.7	*2.0	*0.8	*0.0	11.0	21.2
200 and under 240	14.7	*1.5	*4.5	*4.4	*3.3	*1.2	*0.5	15.3	30.0
240 and under 280	18.4	8.0	6.3	*4.8	*4.6	*1.8	*0.4	26.1	44.4
280 and under 320	16.2	11.4	6.3	*5.2	7.4	*1.7	*0.7	32.7	48.9
320 and under 360	13.7	20.2	10.8	11.1	6.9	*2.2	*1.8	52.9	66.7
360 and under 400	9.4	21.7	18.8	12.5	8.5	*3.9	*2.5	67.9	77.3
400 and under 440	9.5	38.7	49.7	39.0	23.7	10.7	6.8	168.5	178.1
440 and under 480	6.0	31.3	66.5	37.1	35.2	8.1	8.1	186.4	192.3
480 and under 520	*4.5	44.1	90.6	62.4	54.9	11.7	10.3	273.9	278.4
520 and under 560	*2.1	27.0	74.6	55.6	40.2	9.5	8.1	215.0	217.1
560 and under 600	*0.8	15.6	45.4	26.5	21.5	8.6	*4.1	121.7	122.5
600 and under 640	*1.0	25.9	69.4	67.8	39.0	13.8	5.2	221.1	222.1
640 and under 680	*1.0	14.6	57.0	42.6	25.8	8.3	*3.0	151.3	152.2
680 and under 720	*0.1	15.2	62.2	54.1	37.3	9.4	6.4	184.6	184.7
720 and under 760	*0.4	12.1	49.4	41.1	29.5	8.7	*4.0	144.9	145.3
760 and under 800	*0.0	*3.7	22.7	21.4	19.3	*3.6	*1.3	72.0	72.0
800 and under 840	*0.1	12.0	42.8	52.2	31.8	5.3	*2.7	146.8	146.9
840 and under 880	*0.0	5.9	34.8	31.0	23.0	*3.5	*2.6	100.7	100.7
880 and under 920	*0.2	5.7	30.7	40.7	26.5	6.7	*3.2	113.5	113.7
920 and under 960	*0.0	*2.4	17.2	21.5	13.5	5.4	*0.4	60.4	60.4
960 and under 1000	*0.0	*1.9	14.0	16.8	11.4	*3.8	*1.5	49.3	49.3
1000 and under 1040	*0.3	*1.8	23.5	36.4	30.9	5.7	*1.0	99.4	99.7
1040 and under 1080	*0.0	*0.8	8.9	13.9	10.9	*1.5	*0.3	36.3	36.3
1080 and over	*1.2	7.6	88.2	147.1	131.5	26.8	11.8	413.0	414.2
Could not be determined(a)	6.4	19.3	53.6	53.9	54.7	20.8	11.4	213.8	220.2
Total	121.1	353.8	955.3	912.4	703.8	185.6	101.8	3,212.7	3,333.8
— \$ —									
Median weekly earnings in main job	292	498	607	687	688	615	544	625	605
Mean weekly earnings in main job	330	545	712	834	859	852	730	768	752
FEMALES									
— '000 —									
<i>Weekly earnings in main job (\$) —</i>									
Under 80	*0.6	*1.3	*3.7	*1.9	*2.6	*0.0	*0.0	9.6	10.2
80 and under 160	*3.3	*1.2	*1.2	*2.4	*1.7	*0.8	*0.9	8.2	11.5
160 and under 200	6.7	*1.5	*1.5	*2.3	*2.0	*0.4	*0.3	8.0	14.8
200 and under 240	6.4	*0.8	*3.0	*3.6	*4.3	*0.4	*0.3	12.4	18.8
240 and under 280	9.9	*3.6	6.0	*4.6	*5.1	*0.8	*0.5	20.6	30.5
280 and under 320	8.6	9.7	*4.0	7.2	6.2	*1.2	*1.0	29.3	37.9
320 and under 360	8.0	17.0	13.2	9.0	12.6	*1.1	*1.7	54.6	62.6
360 and under 400	5.3	23.0	14.0	15.9	13.2	*1.9	*0.1	68.1	73.4
400 and under 440	6.2	34.0	38.4	28.8	26.5	*4.9	*2.4	134.9	141.0
440 and under 480	*3.8	40.8	40.9	28.8	29.2	*4.5	*2.0	146.2	150.0
480 and under 520	*2.3	37.6	53.0	38.8	28.3	7.7	*2.6	167.9	170.2
520 and under 560	*1.7	21.8	44.8	33.1	25.9	6.3	*0.3	132.3	134.0
560 and under 600	*0.0	13.6	28.3	22.0	18.4	*1.5	*1.4	85.2	85.2
600 and under 640	*0.8	17.9	50.4	35.4	20.9	*4.2	*1.6	130.2	131.0
640 and under 680	*1.1	15.0	26.7	17.6	12.5	*2.6	*2.2	76.6	77.7
680 and under 720	*0.0	*3.4	29.3	18.4	16.1	*2.6	*0.6	70.4	70.4
720 and under 760	*0.0	*4.5	28.6	15.0	15.6	*3.6	*1.2	68.4	68.4
760 and under 800	*0.0	*0.9	16.7	11.3	8.3	*3.2	*0.3	40.7	40.7
800 and under 840	*0.0	*1.8	21.7	15.5	15.5	*3.7	*0.1	58.3	58.3
840 and under 880	*0.0	*1.2	13.3	16.5	11.2	*2.4	*1.0	45.6	45.6
880 and under 920	*0.0	*1.0	13.3	18.2	13.4	*3.5	*0.3	49.7	49.7
920 and under 960	*0.0	*1.2	*4.8	7.0	7.7	*0.8	*0.0	21.4	21.4
960 and under 1000	*0.0	*0.0	*2.7	5.2	*4.4	*1.1	*0.3	13.8	13.8
1000 and under 1040	*0.0	*0.4	9.5	9.6	6.4	*0.8	*0.0	26.7	26.7
1040 and under 1080	*0.0	*0.6	*3.5	5.6	*4.4	*0.0	*0.3	14.4	14.4
1080 and over	*0.5	*2.5	21.7	18.5	16.8	*3.0	*0.3	62.8	63.3
Could not be determined(a)	*2.2	16.3	30.8	25.7	21.2	*2.3	*1.8	98.1	100.3
Total	67.4	272.6	525.0	417.9	350.3	65.4	23.5	1,654.7	1,722.0
— \$ —									
Median weekly earnings in main job	294	461	570	571	556	571	499	545	533
Mean weekly earnings in main job	329	492	633	652	650	668	535	618	606

TABLE 10. WEEKLY EARNINGS OF FULL-TIME EMPLOYEES IN MAIN JOB BY AGE—continued

	15-19	20-24	25-34	35-44	45-54	55-59	60 and over	20 and over	15 and over
	PERSONS								
	— '000 —								
<i>Weekly earnings in main job (\$)</i> —									
Under 80	*1.9	*2.9	7.2	6.9	8.8	*1.0	*1.8	28.6	30.5
80 and under 160	7.0	*2.2	*3.6	7.2	6.0	*1.9	*2.7	23.5	30.5
160 and under 200	16.9	*4.2	*3.2	6.0	*4.1	*1.2	*0.3	19.0	35.9
200 and under 240	21.1	*2.3	7.5	7.9	7.6	*1.5	*0.8	27.7	48.8
240 and under 280	28.3	11.7	12.4	9.4	9.7	*2.6	*0.9	46.6	74.9
280 and under 320	24.8	21.1	10.3	12.4	13.6	*2.9	*1.7	62.0	86.8
320 and under 360	21.7	37.2	24.0	20.1	19.5	*3.3	*3.5	107.6	129.3
360 and under 400	14.7	44.7	32.8	28.5	21.7	5.8	*2.6	136.0	150.7
400 and under 440	15.7	72.7	88.1	67.8	50.2	15.6	9.1	303.4	319.1
440 and under 480	9.8	72.1	107.4	65.9	64.4	12.7	10.1	332.6	342.4
480 and under 520	6.7	81.7	143.5	101.1	83.2	19.4	12.9	441.9	448.6
520 and under 560	*3.8	48.8	119.5	88.7	66.1	15.7	8.4	347.3	351.1
560 and under 600	*0.8	29.2	73.7	48.5	39.9	10.0	5.6	206.9	207.7
600 and under 640	*1.8	43.8	119.7	103.2	59.9	18.0	6.7	351.3	353.1
640 and under 680	*2.0	29.5	83.7	60.2	38.3	10.9	5.3	227.9	229.9
680 and under 720	*0.1	18.6	91.4	72.4	53.4	12.1	7.0	255.0	255.1
720 and under 760	*0.4	16.6	78.0	56.1	45.1	12.3	5.2	213.2	213.6
760 and under 800	*0.0	*4.6	39.3	32.7	27.6	6.9	*1.6	112.7	112.7
800 and under 840	*0.1	13.7	64.5	67.8	47.3	9.0	*2.8	205.1	205.3
840 and under 880	*0.0	7.0	48.1	47.5	34.2	6.0	*3.5	146.3	146.3
880 and under 920	*0.2	6.7	44.0	58.9	39.9	10.2	*3.5	163.3	163.5
920 and under 960	*0.0	*3.6	22.0	28.5	21.2	6.2	*0.4	81.8	81.8
960 and under 1000	*0.0	*1.9	16.8	22.0	15.8	*4.9	*1.8	63.1	63.1
1000 and under 1040	*0.3	*2.1	33.0	46.1	37.4	6.5	*1.0	126.2	126.4
1040 and under 1080	*0.0	*1.4	12.4	19.5	15.3	*1.5	*0.6	50.7	50.7
1080 and over	*1.8	10.1	109.9	165.6	148.3	29.9	12.1	475.8	477.6
Could not be determined(a)	8.6	35.6	84.4	79.6	75.9	23.1	13.3	311.9	320.5
Total	188.4	626.3	1,480.3	1,330.3	1,054.1	251.1	125.3	4,867.3	5,055.8
			— \$ —						
Median weekly earnings in main job	293	484	592	648	634	604	533	589	581
Mean weekly earnings in main job	330	522	684	777	789	801	692	717	702

(a) See paragraphs 15 and 16 of the Explanatory Notes.

TABLE 11. WEEKLY EARNINGS OF FULL-TIME EMPLOYEES IN MAIN JOB BY SIZE OF LOCATION

	<i>Less than 10</i>	<i>10 - 19</i>	<i>20 - 99</i>	<i>100 or more</i>	<i>Don't know</i>	<i>Total</i>
MALES						
— '000 —						
<i>Weekly earnings in main job (\$) —</i>						
Under 80	10.0	*2.8	*2.9	*3.6	*0.9	20.3
80 and under 160	13.6	*0.4	*2.6	*1.1	*1.2	18.9
160 and under 240	30.8	7.0	6.5	6.1	*0.8	51.2
240 and under 320	45.0	14.4	18.4	10.8	*4.7	93.3
320 and under 400	56.8	27.0	32.0	23.6	*4.5	143.9
400 and under 480	116.6	55.1	93.4	90.4	14.9	370.4
480 and under 560	133.8	72.0	117.8	154.8	17.1	495.5
560 and under 640	76.1	43.1	96.6	117.5	11.1	344.5
640 and under 720	67.6	43.2	91.4	127.7	7.0	337.0
720 and under 800	35.1	24.0	67.3	85.8	*5.0	217.2
800 and under 880	34.9	24.4	75.8	105.7	6.8	247.6
880 and under 960	23.3	18.0	48.2	81.0	*3.7	174.1
960 and under 1040	19.2	15.5	35.8	75.2	*3.3	149.1
1040 and over	53.1	33.2	102.8	254.2	7.3	450.5
Could not be determined(a)	62.7	23.1	46.5	73.1	14.8	220.2
<i>Total</i>	<i>778.8</i>	<i>403.3</i>	<i>838.1</i>	<i>1,210.5</i>	<i>103.0</i>	<i>3,333.8</i>
— \$ —						
Median weekly earnings in main job	505	565	642	710	511	605
Mean weekly earnings in main job	613	675	754	873	643	752
FEMALES						
— '000 —						
<i>Weekly earnings in main job (\$) —</i>						
Under 80	*3.4	*1.6	*2.9	*2.2	*0.0	10.2
80 and under 160	6.6	*0.6	*2.9	*1.4	*0.0	11.5
160 and under 240	17.6	*3.7	7.2	*3.7	*1.2	33.5
240 and under 320	31.6	11.5	13.4	9.7	*2.2	68.4
320 and under 400	46.5	24.6	31.3	30.4	*3.1	136.0
400 and under 480	75.8	38.9	72.7	94.8	8.9	291.0
480 and under 560	63.3	44.8	75.3	115.9	*5.0	304.2
560 and under 640	34.5	20.4	68.6	89.1	*3.8	216.3
640 and under 720	19.3	20.6	38.7	67.2	*2.4	148.1
720 and under 800	12.4	10.5	34.8	49.4	*2.1	109.1
800 and under 880	7.9	11.8	35.6	48.2	*0.4	103.9
880 and under 960	6.3	8.0	22.7	33.8	*0.3	71.1
960 and under 1040	*2.4	*2.4	13.6	22.0	*0.0	40.5
1040 and over	6.6	7.6	17.0	45.7	*0.8	77.7
Could not be determined(a)	19.9	14.5	21.6	37.1	7.3	100.3
<i>Total</i>	<i>354.1</i>	<i>221.5</i>	<i>458.2</i>	<i>650.7</i>	<i>37.4</i>	<i>1,722.0</i>
— \$ —						
Median weekly earnings in main job	453	503	563	584	452	533
Mean weekly earnings in main job	495	573	620	671	551	606
PERSONS						
— '000 —						
<i>Weekly earnings in main job (\$) —</i>						
Under 80	13.4	*4.4	5.8	5.9	*0.9	30.5
80 and under 160	20.2	*1.1	5.5	*2.5	*1.2	30.5
160 and under 240	48.4	10.8	13.7	9.8	*2.0	84.7
240 and under 320	76.7	25.9	31.8	20.5	6.9	161.8
320 and under 400	103.3	51.6	63.3	54.0	7.6	279.9
400 and under 480	192.4	94.0	166.0	185.2	23.8	661.4
480 and under 560	197.1	116.8	193.1	270.7	22.0	799.7
560 and under 640	110.6	63.5	165.2	206.6	14.9	560.8
640 and under 720	86.9	63.8	130.1	194.9	9.3	485.0
720 and under 800	47.5	34.4	102.1	135.2	7.1	326.3
800 and under 880	42.8	36.1	111.4	154.0	7.2	351.6
880 and under 960	29.6	25.9	70.9	114.8	*4.0	245.3
960 and under 1040	21.6	18.0	49.5	97.2	*3.3	189.5
1040 and over	59.8	40.7	119.8	299.9	8.1	528.2
Could not be determined(a)	82.6	37.6	68.0	110.1	22.1	320.5
<i>Total</i>	<i>1,133.0</i>	<i>624.8</i>	<i>1,296.4</i>	<i>1,861.2</i>	<i>140.4</i>	<i>5,055.8</i>
— \$ —						
Median weekly earnings in main job	494	541	598	667	501	581
Mean weekly earnings in main job	575	639	706	802	620	702

(a) See paragraphs 15 and 16 of the Explanatory Notes.

TABLE 12. WEEKLY EARNINGS OF MULTIPLE JOB HOLDERS WHO WERE EMPLOYEES IN BOTH JOBS

	Weekly earnings in second job (\$)				Total	Median weekly earnings in second job	Mean weekly earnings in second job
	Under 80	80 and under 160	160 and over	Could not be determined			
MALES							
	- '000 -					\$ ---	
<i>Weekly earnings in main job (\$)</i> ---							
Under 160	6.3	*3.2	*4.0	*0.4	14.0	81	157
160 and under 320	*3.1	*4.1	6.5	*0.4	14.1	136	193
320 and under 480	*4.9	6.4	7.1	*0.7	19.1	136	161
480 and under 640	*3.8	9.4	9.3	*2.0	24.6	122	166
640 and under 800	*2.2	*3.0	5.2	*0.5	10.9	149	222
800 and under 960	*0.4	*1.5	*3.7	*1.1	6.7	240	222
960 and over	*2.6	*2.8	6.4	*1.2	12.9	151	286
Could not be determined(a)	*0.4	*0.0	*1.0	*4.9	6.3
Total	23.7	30.5	43.1	11.3	108.6	124	195
	--- \$ ---						
Median weekly earnings in main job	400	500	544	..	487
Mean weekly earnings in main job	445	531	640	..	564
FEMALES							
	--- '000 ---					--- \$ ---	
<i>Weekly earnings in main job (\$)</i> ---							
Under 160	20.0	5.5	*4.3	*1.9	31.7	51	85
160 and under 320	12.8	15.1	11.6	*2.4	41.9	101	141
320 and under 480	6.8	8.5	10.2	*1.6	27.1	123	156
480 and under 640	5.3	6.5	5.4	*1.9	19.1	122	153
640 and under 800	*1.6	*0.7	*3.8	*0.5	6.6	252	251
800 and under 960	*0.2	*1.6	*3.2	*0.7	5.7	176	*202
960 and over	*0.0	*0.0	*1.4	*0.4	*1.8	305	*297
Could not be determined(a)	*1.3	*0.2	*0.0	*2.8	*4.3
Total	47.9	38.0	40.0	12.2	138.1	95	140
	--- \$ ---						
Median weekly earnings in main job	195	303	363	..	283
Mean weekly earnings in main job	248	342	437	..	342
PERSONS							
	--- '000 ---					--- \$ ---	
<i>Weekly earnings in main job (\$)</i>							
Under 160	26.3	8.7	8.3	*2.3	45.7	54	107
160 and under 320	15.9	19.2	18.1	*2.8	56.0	104	154
320 and under 480	11.6	14.9	17.3	*2.3	46.2	129	158
480 and under 640	9.1	15.9	14.7	*4.0	43.6	122	160
640 and under 800	*3.8	*3.7	9.0	*1.0	17.5	168	233
800 and under 960	*0.7	*3.1	6.9	*1.7	12.4	184	212
960 and over	*2.6	*2.8	7.8	*1.5	14.7	164	288
Could not be determined(a)	*1.7	*0.2	*1.0	7.7	10.6
Total	71.6	68.5	83.1	23.5	246.7	104	164
	--- \$ ---						
Median weekly earnings in main job	251	392	449	..	354
Mean weekly earnings in main job	314	426	540	..	438

(a) See paragraphs 15 and 16 of the Explanatory Notes.

TABLE 13. STANDARD BENEFITS RECEIVED BY EMPLOYEES IN MAIN JOB

	No standard benefit received	Type of standard benefit received				Total(a)	Proportion receiving a benefit
		Super-annuation	Holiday leave	Sick leave	Long-service leave		
MALES							
— '000 —							
%							
<i>Weekly earnings in main job (\$) —</i>							
Under 160	151.4	94.2	31.9	33.1	24.6	259.8	41.7
160 and under 320	55.1	197.2	130.8	130.9	86.0	272.8	79.8
320 and under 480	31.9	539.8	449.3	448.3	350.7	593.5	94.6
480 and under 640	17.7	831.6	756.7	757.6	656.0	870.7	98.0
640 and under 800	10.0	548.7	508.4	507.2	450.5	565.3	98.2
800 and under 960	5.3	417.3	384.2	382.9	358.1	426.6	98.8
960 and over	14.3	583.6	543.7	542.0	494.0	607.3	97.6
Could not be determined(b)	20.0	215.3	181.9	181.3	156.0	241.6	91.7
<i>Industry —</i>							
Agriculture, forestry and fishing	15.5	93.8	60.5	59.9	31.6	115.5	86.6
Mining	*1.7	67.3	62.9	62.7	55.7	69.0	97.6
Manufacturing	24.4	738.5	689.5	687.4	604.5	782.4	96.9
Electricity, gas and water supply	*0.0	60.4	58.2	57.7	57.9	60.6	100.0
Construction	26.4	269.1	213.4	213.7	189.7	305.3	91.3
Wholesale trade	16.8	277.2	259.5	258.7	212.8	301.6	94.4
Retail trade	94.4	354.9	280.5	282.9	217.4	469.2	79.9
Accommodation, cafes and restaurants	28.9	116.5	81.7	80.3	61.1	150.4	80.8
Transport and storage	15.6	218.2	187.8	186.9	168.4	237.9	93.5
Communication services	*4.9	86.4	84.0	83.7	78.8	92.3	94.7
Finance and insurance	*2.9	126.7	120.6	119.7	112.8	131.4	97.8
Property and business services	34.7	344.0	270.9	268.7	212.7	391.5	91.1
Government administration and defence	*3.3	178.0	171.7	173.4	169.4	182.8	98.2
Education	9.9	172.7	157.4	160.3	152.0	185.9	94.7
Health and community services	9.2	137.7	124.2	123.6	108.9	151.2	93.9
Cultural and recreational services	8.9	65.8	52.3	52.9	39.5	77.2	88.5
Personal and other services	8.2	120.7	111.7	110.8	102.8	133.4	93.8
<i>Occupation —</i>							
Managers and administrators	13.6	260.5	236.4	238.5	202.8	283.7	95.2
Professionals	23.2	589.2	534.3	534.8	465.0	626.3	96.3
Associate professionals	17.1	415.9	376.5	373.0	328.0	441.6	96.1
Tradespersons and related workers	31.7	716.2	650.8	647.9	549.9	774.2	95.9
Advanced clerical and service workers	*1.3	33.4	31.0	30.7	27.9	35.3	96.3
Intermediate clerical, sales and service workers	24.4	337.3	296.8	297.9	270.0	368.7	93.4
Intermediate production and transport workers	41.0	507.0	431.0	428.9	369.3	561.2	92.7
Elementary clerical, sales and service workers	65.8	205.9	146.1	148.9	129.6	277.4	76.3
Labourers and related workers	87.5	362.4	284.0	282.6	233.2	469.5	81.4
<i>Full-time and part-time employees —</i>							
Full-time	90.6	3,158.7	2,913.2	2,904.3	2,513.4	3,333.8	97.3
Part-time	215.0	269.1	73.6	78.9	62.4	504.0	57.3
<i>Permanent or casual employees —</i>							
Permanent	..	2,941.2	2,986.8	2,983.2	2,510.7	3,036.3	100.0
Casual	305.7	486.5	65.0	801.5	61.9
<i>Sector —</i>							
Public	16.2	712.2	682.7	687.4	667.9	737.6	97.8
Private	289.4	2,715.6	2,304.1	2,295.8	1,907.8	3,100.1	90.7
<i>Size of location (employees) —</i>							
Less than 10	142.3	745.7	564.2	556.4	385.5	932.0	84.7
10 — 19	44.0	422.4	361.2	358.9	292.6	481.1	90.8
20 — 99	61.1	888.5	798.8	801.9	707.7	974.1	93.7
100 or more	34.5	1,257.1	1,174.2	1,178.2	1,119.0	1,308.0	97.4
Don't know	23.7	114.1	88.5	87.8	71.0	142.6	83.4
Total	305.7	3,427.8	2,986.8	2,983.2	2,575.8	3,837.7	92.0

TABLE 13. STANDARD BENEFITS RECEIVED BY EMPLOYEES IN MAIN JOB—continued

	No standard benefit received	Type of standard benefit received				Total(a)	Proportion receiving a benefit
		Super-annuation	Holiday leave	Sick leave	Long-service leave		
FEMALES							
— '000 —							
%							
<i>Weekly earnings in main job (\$) —</i>							
Under 160	222.4	229.8	65.2	69.6	47.9	470.0	52.7
160 and under 320	58.2	474.8	268.2	266.6	213.9	555.5	89.5
320 and under 480	25.1	682.8	550.1	548.1	455.3	724.9	96.5
480 and under 640	7.9	602.9	542.7	543.4	482.4	619.7	98.7
640 and under 800	*2.9	283.3	267.5	267.4	247.2	289.7	99.0
800 and under 960	*1.6	184.1	174.8	176.4	168.5	187.5	99.2
960 and over	*1.1	123.8	113.3	114.2	105.2	126.4	99.1
Could not be determined (b)	14.4	140.7	111.7	111.5	92.4	160.8	91.0
<i>Industry —</i>							
Agriculture, forestry and fishing	10.2	28.4	11.7	11.0	5.6	40.6	74.8
Mining	*0.4	6.9	5.6	5.6	5.3	7.3	94.8
Manufacturing	17.4	226.1	182.3	179.7	154.7	251.7	93.1
Electricity, gas and water supply	*0.3	7.4	6.2	6.2	6.2	7.7	96.2
Construction	*3.8	33.8	20.0	21.2	16.6	38.1	90.1
Wholesale trade	7.3	123.0	101.1	100.2	80.7	133.7	94.6
Retail trade	123.8	391.0	234.3	237.5	182.7	528.6	76.6
Accommodation, cafes and restaurants	44.6	145.6	63.6	60.1	43.2	195.0	77.1
Transport and storage	*4.2	67.5	58.0	58.6	52.9	72.7	94.3
Communication services	*1.4	44.7	41.2	40.5	39.0	47.1	97.0
Finance and insurance	*1.8	167.2	153.2	153.7	147.1	170.4	99.0
Property and business services	28.9	291.2	227.8	225.2	174.5	332.1	91.3
Government administration and defence	8.7	142.4	128.1	128.3	124.5	151.6	94.3
Education	25.2	354.5	295.5	308.4	283.4	388.7	93.5
Health and community services	24.9	530.0	443.1	440.7	402.6	567.6	95.6
Cultural and recreational services	11.6	68.0	44.3	44.5	39.1	81.8	85.8
Personal and other services	19.4	94.6	77.4	75.6	54.7	119.7	83.8
<i>Occupation —</i>							
Managers and administrators	*5.1	73.8	65.3	65.5	58.1	81.8	93.8
Professionals	29.9	634.6	551.4	559.9	508.9	673.1	95.6
Associate professionals	13.8	240.3	210.8	208.9	180.0	260.1	94.7
Tradespersons and related workers	6.3	67.5	54.8	54.0	38.3	77.0	91.9
Advanced clerical and service workers	15.9	257.8	212.9	210.4	178.6	282.2	94.4
Intermediate clerical, sales and service workers	74.8	790.8	606.4	607.3	527.3	887.2	91.6
Intermediate production and transport workers	11.0	78.8	56.0	56.3	45.1	92.9	88.2
Elementary clerical, sales and service workers	126.1	367.3	208.5	210.8	172.9	507.6	75.1
Labourers and related workers	50.7	211.4	127.3	124.2	103.5	272.5	81.4
<i>Full-time and part-time employees —</i>							
Full-time	33.3	1,648.6	1,549.6	1,549.0	1,339.7	1,722.0	98.1
Part-time	300.3	1,073.6	543.9	548.2	473.0	1,412.4	78.7
<i>Permanent or casual employees --</i>							
Permanent	..	2,065.4	2,093.4	2,097.2	1,740.7	2,140.4	100.0
Casual	333.6	656.8	72.0	994.0	66.4
<i>Sector —</i>							
Public	32.8	758.9	664.1	674.4	648.1	804.6	95.9
Private	300.8	1,963.3	1,429.4	1,422.8	1,164.6	2,329.8	87.1
<i>Size of location (employees) —</i>							
Less than 10	146.8	593.5	399.8	394.0	267.0	772.6	81.0
10 — 19	52.7	364.3	266.8	265.0	216.8	426.8	87.6
20 — 99	70.6	734.6	581.8	589.0	525.9	824.3	91.4
100 or more	39.4	954.4	799.5	804.4	769.9	1,009.2	96.1
Don't know	24.1	75.4	45.5	44.7	33.1	101.6	76.3
Total	333.6	2,722.2	2,093.4	2,097.2	1,812.7	3,134.4	89.4

TABLE 13. STANDARD BENEFITS RECEIVED BY EMPLOYEES IN MAIN JOB—continued

	No standard benefit received	Type of standard benefit received				Total(a)	Proportion receiving a benefit
		Super-annuation	Holiday leave	Sick leave	Long-service leave		
PERSONS							
— '000 —							
Weekly earnings in main job (\$) —							
Under 160	373.8	324.0	97.1	102.7	72.5	729.9	48.8
160 and under 320	113.3	672.0	399.0	397.4	299.8	828.3	86.3
320 and under 480	56.9	1,222.6	999.4	996.4	806.0	1,318.4	95.7
480 and under 640	25.6	1,434.5	1,299.4	1,300.9	1,138.4	1,490.4	98.3
640 and under 800	12.9	832.0	775.9	774.6	697.7	855.0	98.5
800 and under 960	6.8	601.4	559.0	559.3	526.6	614.1	98.9
960 and over	15.4	707.4	657.0	656.3	599.2	733.7	97.9
Could not be determined(b)	34.4	356.0	293.6	292.8	248.4	402.4	91.4
Industry —							
Agriculture, forestry and fishing	25.7	122.3	72.2	70.9	37.2	156.1	83.5
Mining	*2.1	74.2	68.5	68.3	61.0	76.3	97.3
Manufacturing	41.7	964.5	871.7	867.0	759.2	1,034.1	96.0
Electricity, gas and water supply	*0.3	67.8	64.4	63.9	64.1	68.3	99.6
Construction	30.2	302.9	233.4	234.9	206.2	343.4	91.2
Wholesale trade	24.1	400.2	360.6	358.9	293.5	435.3	94.5
Retail trade	218.2	745.9	514.8	520.4	400.1	997.8	78.1
Accommodation, cafes and restaurants	73.4	262.1	145.3	140.4	104.3	345.4	78.7
Transport and storage	19.7	285.7	245.8	245.5	221.2	310.7	93.7
Communication services	6.3	131.1	125.2	124.2	117.7	139.4	95.5
Finance and insurance	*4.6	293.9	273.8	273.4	259.9	301.9	98.5
Property and business services	63.6	635.2	498.7	494.0	387.3	723.7	91.2
Government administration and defence	12.0	320.4	299.8	301.7	293.9	334.4	96.4
Education	35.1	527.2	453.0	468.7	435.4	574.6	93.9
Health and community services	34.1	667.7	567.4	564.3	511.5	718.8	95.3
Cultural and recreational services	20.5	133.8	96.6	97.4	78.5	159.0	87.1
Personal and other services	27.6	215.3	189.0	186.4	157.4	253.0	89.1
Occupation —							
Managers and administrators	18.7	334.3	301.7	304.0	260.9	365.5	94.9
Professionals	53.1	1,223.8	1,085.7	1,094.7	973.9	1,299.4	95.9
Associate professionals	30.9	656.1	587.3	581.9	508.0	701.7	95.6
Tradespersons and related workers	38.0	783.6	705.6	701.9	588.2	851.2	95.5
Advanced clerical and service workers	17.2	291.2	243.9	241.1	206.5	317.5	94.6
Intermediate clerical, sales and service workers	99.3	1,128.1	903.2	905.2	797.3	1,255.8	92.1
Intermediate production and transport workers	51.9	585.7	487.0	485.1	414.4	654.0	92.1
Elementary clerical, sales and service workers	191.9	573.3	354.6	359.6	302.5	785.0	75.5
Labourers and related workers	138.2	573.8	411.3	406.8	336.6	742.0	81.4
Full-time and part-time employees —							
Full-time	123.9	4,807.4	4,462.8	4,453.2	3,853.0	5,055.8	97.5
Part-time	515.3	1,342.6	617.5	627.2	535.4	1,916.4	73.1
Permanent or casual employees —							
Permanent	..	5,006.6	5,080.3	5,080.4	4,251.4	5,176.6	100.0
Casual	639.3	1,143.4	137.1	1,795.5	64.4
Sector —							
Public	49.1	1,471.1	1,346.8	1,361.8	1,316.0	1,542.2	96.8
Private	590.2	4,678.9	3,733.5	3,718.6	3,072.4	5,430.0	89.1
Size of location (employees) —							
Less than 10	289.2	1,339.2	964.0	950.4	652.5	1,704.5	83.0
10 — 19	96.8	786.7	628.0	623.9	509.3	907.8	89.3
20 — 99	131.7	1,623.1	1,380.6	1,390.9	1,233.6	1,798.4	92.7
100 or more	73.9	2,211.5	1,973.8	1,982.6	1,888.8	2,317.1	96.8
Don't know	47.7	189.5	133.9	132.4	104.1	244.2	80.5
Total	639.3	6,150.0	5,080.3	5,080.4	4,388.4	6,972.1	90.8

(a) Includes persons receiving more than one standard benefit. (b) See paragraphs 15 and 16 of the Explanatory Notes.

TABLE 14. SOURCE OF SUPERANNUATION COVERAGE IN MAIN JOB

	Full-time employees			Part-time employees			Total		
	Males	Females	Persons	Males	Females	Persons	Males	Females	Persons
COVERED BY CURRENT EMPLOYER									
<i>Weekly earnings in main job (\$) ---</i>									
Under 160	27.4	14.3	41.7	66.8	215.6	282.4	94.2	229.8	324.0
160 and under 320	117.8	82.7	200.5	79.4	392.1	471.5	197.2	474.8	672.0
320 and under 480	474.1	407.3	881.4	65.7	275.5	341.2	539.8	682.8	1,222.6
480 and under 640	805.2	509.7	1,314.9	26.4	93.2	119.6	831.6	602.9	1,434.5
640 and under 800	538.0	252.6	790.7	10.7	30.7	41.3	548.7	283.3	832.0
800 and under 960	413.6	172.2	585.8	*3.7	11.9	15.6	417.3	184.1	601.4
960 and over	578.7	116.2	694.9	*4.9	7.6	12.5	583.6	123.8	707.4
Could not be determined(a)	203.8	93.6	297.4	11.5	47.1	58.6	215.3	140.7	356.0
<i>Industry ---</i>									
Agriculture, forestry and fishing	83.3	15.3	98.6	10.5	13.1	23.6	93.8	28.4	122.3
Mining	66.3	5.4	71.6	*1.0	*1.5	*2.6	67.3	6.9	74.2
Manufacturing	713.3	175.8	889.1	25.2	50.3	75.5	738.5	226.1	964.5
Electricity, gas and water supply	59.0	6.6	65.5	*1.4	*0.9	*2.2	60.4	7.4	67.8
Construction	259.0	19.7	278.7	10.1	14.1	24.2	269.1	33.8	302.9
Wholesale trade	266.2	89.8	356.0	11.0	33.2	44.2	277.2	123.0	400.2
Retail trade	286.8	162.0	448.8	68.1	229.0	297.2	354.9	391.0	745.9
Accommodation, cafes and restaurants	83.9	56.9	140.8	32.6	88.7	121.3	116.5	145.6	262.1
Transport and storage	205.3	55.1	260.4	12.8	12.5	25.3	218.2	67.5	285.7
Communication services	83.6	36.7	120.3	*2.8	8.0	10.8	86.4	44.7	131.1
Finance and insurance	123.0	118.6	241.6	*3.7	48.6	52.3	126.7	167.2	293.9
Property and business services	316.1	202.3	518.4	28.0	88.8	116.8	344.0	291.2	635.2
Government administration and defence	173.7	111.5	285.2	*4.3	30.9	35.1	178.0	142.4	320.4
Education	151.1	224.1	375.3	21.5	130.4	151.9	172.7	354.5	527.2
Health and community services	121.5	266.2	387.7	16.2	263.7	280.0	137.7	530.0	667.7
Cultural and recreational services	53.5	38.5	92.0	12.3	29.5	41.8	65.8	68.0	133.8
Personal and other services	113.2	64.2	177.3	7.5	30.4	37.9	120.7	94.6	215.3
<i>Sector ---</i>									
Public	676.5	522.9	1,199.4	35.7	236.0	271.7	712.2	758.9	1,471.1
Private	2,482.3	1,125.7	3,608.0	233.4	837.6	1,071.0	2,715.6	1,963.3	4,678.9
Total	3,158.7	1,648.6	4,807.4	269.1	1,073.6	1,342.6	3,427.8	2,722.2	6,150.0
COVERED BY OTHER THAN CURRENT EMPLOYER									
<i>Weekly earnings in main job (\$) ---</i>									
Under 160	*2.7	*0.2	*2.9	12.8	19.1	31.9	15.5	19.3	34.8
160 and under 320	6.1	*1.9	8.0	5.9	7.8	13.7	12.0	9.7	21.7
320 and under 480	8.9	*3.2	12.2	*1.8	*4.2	6.0	10.7	7.4	18.1
480 and under 640	13.0	*2.7	15.7	*1.3	*1.8	*3.1	14.3	*4.5	18.8
640 and under 800	7.9	*1.3	9.1	*0.2	*0.4	*0.6	8.0	*1.7	9.8
800 and under 960	*4.4	*1.4	5.8	*0.8	*0.0	*0.8	5.3	*1.4	6.6
960 and over	12.8	*1.2	13.9	*1.5	*0.6	*2.1	14.3	*1.7	16.0
Could not be determined(a)	7.2	*1.2	8.3	*2.3	*1.5	*3.7	9.4	*2.6	12.1
<i>Industry ---</i>									
Agriculture, forestry and fishing	*4.3	*0.1	*4.4	*2.4	*1.0	*3.4	6.7	*1.1	7.8
Mining	*0.3	*0.4	*0.7	*0.0	*0.0	*0.0	*0.3	*0.4	*0.7
Manufacturing	7.4	*1.6	9.0	*2.9	*2.5	5.4	10.3	*4.1	14.4
Electricity, gas and water supply	*0.0	*0.1	*0.1	*0.0	*0.0	*0.0	*0.0	*0.1	*0.1
Construction	10.6	*0.3	10.9	*2.1	*0.2	*2.4	12.8	*0.5	13.3
Wholesale trade	*4.6	*0.9	5.4	*2.1	*1.1	*3.2	6.7	*2.0	8.6
Retail trade	6.3	*1.0	7.3	*3.1	7.3	10.4	9.4	8.3	17.7
Accommodation, cafes and restaurants	*3.6	*2.4	6.0	*2.8	*2.9	5.7	6.4	5.3	11.7
Transport and storage	*4.9	*0.3	5.2	*1.6	*0.8	*2.4	6.5	*1.1	7.6
Communication services	*2.1	*0.3	*2.4	*0.1	*0.0	*0.1	*2.2	*0.3	*2.5
Finance and insurance	*1.2	*0.6	*1.8	*0.3	*0.0	*0.3	*1.5	*0.6	*2.0
Property and business services	11.2	*2.4	13.7	*3.0	6.5	9.5	14.2	8.9	23.1
Government administration and defence	*0.1	*0.1	*0.2	*0.1	*0.5	*0.5	*0.2	*0.5	*0.7
Education	*1.1	*0.6	*1.7	*3.0	*4.7	7.6	*4.1	5.3	9.4
Health and community services	*2.4	*1.3	*3.7	*0.7	*5.0	5.7	*3.0	6.3	9.4
Cultural and recreational services	*0.9	*0.1	*1.1	*0.2	*1.5	*1.7	*1.1	*1.6	*2.8
Personal and other services	*1.9	*0.6	*2.5	*2.3	*1.3	*3.7	*4.2	*1.9	6.1
<i>Sector ---</i>									
Public	*4.5	*0.9	5.4	*2.7	*4.6	7.3	7.2	5.5	12.7
Private	58.4	12.1	70.6	24.0	30.7	54.7	82.4	42.8	125.3
Total	62.9	13.0	76.0	26.7	35.3	62.0	89.6	48.3	137.9

TABLE 14. SOURCE OF SUPERANNUATION COVERAGE IN MAIN JOB—continued

	Full-time employees			Part-time employees			Total		
	Males	Females	Persons	Males	Females	Persons	Males	Females	Persons
NOT COVERED									
<i>Weekly earnings in main job (\$) —</i>									
Under 160	9.1	7.3	16.4	141.0	213.6	354.6	150.1	220.9	371.0
160 and under 320	20.6	17.4	37.9	43.0	53.6	96.7	63.6	71.0	134.6
320 and under 480	31.3	16.5	47.8	11.7	18.1	29.8	42.9	34.6	77.6
480 and under 640	21.9	8.1	30.0	*3.0	*4.2	7.1	24.9	12.3	37.1
640 and under 800	8.3	*3.3	11.6	*0.3	*1.4	*1.7	8.6	*4.6	13.2
800 and under 960	*3.7	*1.6	5.2	*0.3	*0.5	*0.8	*4.0	*2.1	6.1
960 and over	8.1	*0.8	8.9	*1.3	*0.1	*1.4	9.4	*0.9	10.3
Could not be determined(a)	9.2	5.5	14.7	7.7	12.0	19.7	16.9	17.5	34.4
<i>Industry —</i>									
Agriculture, forestry and fishing	8.2	*2.8	11.1	6.8	8.2	15.0	15.0	11.0	26.1
Mining	*1.4	*0.0	*1.4	*0.0	*0.0	*0.0	*1.4	*0.0	*1.4
Manufacturing	21.6	7.3	28.9	12.0	14.3	26.2	33.6	21.5	55.1
Electricity, gas and water supply	*0.2	*0.2	*0.4	*0.0	*0.0	*0.0	*0.2	*0.2	*0.4
Construction	15.4	*1.6	17.0	8.0	*2.2	10.3	23.4	*3.9	27.3
Wholesale trade	10.6	*3.3	14.0	7.1	5.4	12.5	17.7	8.7	26.5
Retail trade	13.9	7.4	21.3	91.1	121.9	212.9	104.9	129.3	234.2
Accommodation, cafes and restaurants	*5.0	5.9	10.9	22.5	38.2	60.7	27.5	44.1	71.6
Transport and storage	6.6	*1.6	8.2	6.7	*2.5	9.2	13.3	*4.1	17.4
Communication services	*2.1	*0.9	*3.0	*1.7	*1.2	*2.8	*3.8	*2.1	5.9
Finance and insurance	*1.4	*0.6	*2.0	*1.9	*2.1	*4.0	*3.3	*2.7	5.9
Property and business services	13.0	9.4	22.4	20.3	22.7	43.0	33.3	32.0	65.3
Government administration and defence	*1.9	*2.5	*4.4	*2.7	6.2	8.9	*4.6	8.7	13.3
Education	*2.6	*3.8	6.4	6.5	25.1	31.7	9.1	28.9	38.1
Health and community services	*3.4	6.2	9.5	7.1	25.1	32.2	10.5	31.3	41.7
Cultural and recreational services	*1.6	*1.9	*3.5	8.7	10.2	18.9	10.2	12.1	22.4
Personal and other services	*3.2	*5.0	8.1	5.3	18.2	23.5	8.5	23.2	31.6
<i>Sector —</i>									
Public	6.3	8.9	15.2	12.0	31.2	43.3	18.3	40.2	58.4
Private	105.8	51.4	157.3	196.3	272.3	468.5	302.1	323.7	625.8
Total	112.1	60.4	172.4	208.3	303.5	511.8	320.4	363.9	684.2
TOTAL									
<i>Weekly earnings in main job (\$) —</i>									
Under 160	39.2	21.7	61.0	220.6	448.3	668.9	259.8	470.0	729.9
160 and under 320	144.5	102.0	246.5	128.4	453.5	581.8	272.8	555.5	828.3
320 and under 480	514.3	427.0	941.4	79.2	297.8	377.0	593.5	724.9	1,318.4
480 and under 640	840.1	520.5	1,360.6	30.6	99.2	129.8	870.7	619.7	1,490.4
640 and under 800	554.2	257.2	811.4	11.1	32.5	43.6	565.3	289.7	855.0
800 and under 960	421.8	175.1	596.8	*4.8	12.4	17.2	426.6	187.5	614.1
960 and over	599.6	118.2	717.8	7.8	8.2	16.0	607.3	126.4	733.7
Could not be determined(a)	220.2	100.3	320.5	21.4	60.5	82.0	241.6	160.8	402.4
<i>Industry —</i>									
Agriculture, forestry and fishing	95.8	18.3	114.1	19.7	22.3	42.0	115.5	40.6	156.1
Mining	68.0	5.7	73.7	*1.0	*1.5	*2.6	69.0	7.3	76.3
Manufacturing	742.3	184.6	926.9	40.1	67.0	107.1	782.4	251.7	1,034.1
Electricity, gas and water supply	59.2	6.9	66.0	*1.4	*0.9	*2.2	60.6	7.7	68.3
Construction	285.0	21.6	306.6	20.3	16.5	36.8	305.3	38.1	343.4
Wholesale trade	281.4	94.0	375.4	20.2	39.7	59.9	301.6	133.7	435.3
Retail trade	307.0	170.4	477.4	162.3	358.2	520.5	469.2	528.6	997.8
Accommodation, cafes and restaurants	92.6	65.1	157.7	57.8	129.8	187.7	150.4	195.0	345.4
Transport and storage	216.8	57.0	273.8	21.1	15.8	36.9	237.9	72.7	310.7
Communication services	87.8	37.9	125.7	*4.6	9.2	13.8	92.3	47.1	139.4
Finance and insurance	125.6	119.7	245.4	5.8	50.7	56.5	131.4	170.4	301.9
Property and business services	340.3	214.1	554.4	51.2	118.0	169.2	391.5	332.1	723.7
Government administration and defence	175.7	114.2	289.9	7.1	37.5	44.6	182.8	151.6	334.4
Education	154.9	228.5	383.4	31.0	160.2	191.2	185.9	388.7	574.6
Health and community services	127.2	273.8	401.0	24.0	293.8	317.8	151.2	567.6	718.8
Cultural and recreational services	56.0	40.6	96.6	21.2	41.2	62.4	77.2	81.8	159.0
Personal and other services	118.2	69.7	187.9	15.2	49.9	65.1	133.4	119.7	253.0
<i>Sector —</i>									
Public	687.2	532.8	1,220.0	50.4	271.8	322.2	737.6	804.6	1,542.2
Private	2,646.5	1,189.3	3,835.8	453.6	1,140.6	1,594.2	3,100.1	2,329.8	5,430.0
Total	3,333.8	1,722.0	5,055.8	504.0	1,412.4	1,916.4	3,837.7	3,134.4	6,972.1

(a) See paragraphs 15 and 16 of the Explanatory Notes.

TABLE 15. TRADE UNION MEMBERSHIP OF EMPLOYEES IN MAIN JOB

	Member of a trade union			Total(a)			Proportion of all employees who were trade union members		
	Full-time employees	Part-time employees	Total	Full-time employees	Part-time employees	Total	Full-time employees	Part-time employees	Total
	MALES								
	— '000 —						— % —		
<i>Age group (years) —</i>									
15 — 19	20.9	30.4	51.2	121.1	151.0	272.1	17.2	20.1	18.8
20 — 24	93.0	18.4	111.3	353.8	106.8	460.6	26.3	17.2	24.2
25 — 34	316.7	13.1	329.8	955.3	85.6	1,040.9	33.2	15.3	31.7
35 — 44	354.3	12.1	366.4	912.4	56.8	969.2	38.8	21.3	37.8
45 — 54	280.8	9.5	290.3	703.8	51.5	755.3	39.9	18.4	38.4
55 — 59	75.5	*2.4	77.9	185.6	20.8	206.5	40.7	*11.3	37.7
60 and over	37.1	*2.7	39.7	101.8	31.4	133.2	36.4	*8.5	29.8
<i>Weekly earnings in main job (\$) —</i>									
Under 160	5.8	32.1	37.9	39.2	220.6	259.8	14.9	14.5	14.6
160 and under 320	25.6	22.0	47.6	144.5	128.4	272.8	17.7	17.1	17.4
320 and under 480	131.2	14.8	146.0	514.3	79.2	593.5	25.5	18.7	24.6
480 and under 640	325.3	8.5	333.8	840.1	30.6	870.7	38.7	27.6	38.3
640 and under 800	227.6	*3.9	231.4	554.2	11.1	565.3	41.1	*34.6	40.9
800 and under 960	196.3	*1.7	198.0	421.8	*4.8	426.6	46.5	*35.5	46.4
960 and over	205.6	*2.0	207.6	599.6	7.8	607.3	34.3	*25.5	34.2
Could not be determined(b)	60.8	*3.5	64.4	220.2	21.4	241.6	27.6	*16.5	26.6
<i>Industry —</i>									
Agriculture, forestry and fishing	9.3	*0.4	9.8	95.8	19.7	115.5	9.7	*2.2	8.4
Mining	31.7	*0.5	32.2	68.0	*1.0	69.0	46.6	*47.8	46.6
Manufacturing	313.9	7.6	321.5	742.3	40.1	782.4	42.3	19.0	41.1
Electricity, gas and water supply	40.0	*0.3	40.3	59.2	*1.4	60.6	67.6	*23.2	66.6
Construction	109.7	*3.2	112.9	285.0	20.3	305.3	38.5	*15.9	37.0
Wholesale trade	47.7	*1.5	49.2	281.4	20.2	301.6	16.9	*7.4	16.3
Retail trade	46.5	37.0	83.4	307.0	162.3	469.2	15.1	22.8	17.8
Accommodation, cafes and restaurants	17.4	8.5	26.0	92.6	57.8	150.4	18.8	14.8	17.3
Transport and storage	124.7	5.7	130.4	216.8	21.1	237.9	57.5	27.0	54.8
Communication services	60.6	*1.2	61.8	87.8	*4.6	92.3	69.1	*26.4	66.9
Finance and insurance	37.7	*0.2	37.9	125.6	5.8	131.4	30.0	*3.2	28.8
Property and business services	41.8	8.2	50.1	340.3	51.2	391.5	12.3	16.1	12.8
Government administration and defence	89.5	*0.4	89.9	175.7	7.1	182.8	50.9	*5.1	49.2
Education	89.6	*4.9	94.5	154.9	31.0	185.9	57.9	*15.9	50.9
Health and community services	51.7	*4.2	56.0	127.2	24.0	151.2	40.7	*17.6	37.0
Cultural and recreational services	16.3	*3.2	19.4	56.0	21.2	77.2	29.0	*15.0	25.2
Personal and other services	50.0	*1.3	51.4	118.2	15.2	133.4	42.3	*8.8	38.5
<i>Permanent or casual employees —</i>									
Permanent	1,121.9	27.5	1,149.4	2,950.4	85.9	3,036.3	38.0	32.0	37.9
Casual	56.3	60.9	117.3	383.4	418.1	801.5	14.7	14.6	14.6
<i>Sector —</i>									
Public	432.7	11.4	444.1	687.2	50.4	737.6	63.0	22.7	60.2
Private	745.5	77.0	822.5	2,646.5	453.6	3,100.1	28.2	17.0	26.5
<i>Size of location (employees) —</i>									
Less than 10	106.6	7.5	114.1	778.8	153.1	932.0	13.7	4.9	12.2
10 — 19	98.8	7.0	105.8	403.3	77.8	481.1	24.5	9.0	22.0
20 — 99	310.7	37.7	348.4	838.1	136.0	974.1	37.1	27.7	35.8
100 or more	621.6	29.1	650.6	1,210.5	97.4	1,308.0	51.3	29.8	49.7
Don't know	40.6	7.2	47.8	103.0	39.6	142.6	39.4	18.2	33.5
<i>Total</i>	<i>1,178.2</i>	<i>88.4</i>	<i>1,266.7</i>	<i>3,333.8</i>	<i>504.0</i>	<i>3,837.7</i>	<i>35.3</i>	<i>17.5</i>	<i>33.0</i>
	— \$ —								
Median weekly earnings in main job	664	226	642	605	170	570
Mean weekly earnings in main job	755	302	723	752	254	685

TABLE 15. TRADE UNION MEMBERSHIP OF EMPLOYEES IN MAIN JOB—continued

	Member of a trade union		Total(a)			Proportion of all employees who were trade union members			Total
	Full-time employees	Part-time employees	Full-time employees	Part-time employees	Total employees	Full-time employees	Part-time employees	Total employees	
FEMALES									
	— '000 —					— % —			
<i>Age group (years) —</i>									
15 — 19	11.5	38.0	49.5	67.4	201.9	269.3	17.1	18.8	18.4
20 — 24	51.9	31.8	83.7	272.6	159.7	432.2	19.0	19.9	19.4
25 — 34	141.5	56.3	197.8	525.0	291.9	816.9	26.9	19.3	24.2
35 — 44	153.8	104.9	258.7	417.9	391.2	809.0	36.8	26.8	32.0
45 — 54	134.8	70.5	205.4	350.3	275.2	625.5	38.5	25.6	32.8
55 — 59	24.4	12.0	36.4	65.4	56.7	122.2	37.3	21.2	29.8
60 and over	6.0	6.2	12.2	23.5	35.8	59.3	25.5	17.4	20.6
<i>Weekly earnings in main job (\$) —</i>									
Under 160	*2.4	66.1	68.5	21.7	448.3	470.0	*11.0	14.7	14.6
160 and under 320	18.6	106.8	125.5	102.0	453.5	555.5	18.3	23.6	22.6
320 and under 480	110.4	79.2	189.5	427.0	297.8	724.9	25.8	26.6	26.1
480 and under 640	153.7	34.6	188.3	520.5	99.2	619.7	29.5	34.9	30.4
640 and under 800	97.1	14.4	111.5	257.2	32.5	289.7	37.8	44.2	38.5
800 and under 960	81.0	*4.4	85.5	175.1	12.4	187.5	46.3	*35.9	45.6
960 and over	37.9	*1.8	39.7	118.2	8.2	126.4	32.1	*21.8	31.4
Could not be determined(b)	22.6	12.5	35.1	100.3	60.5	160.8	22.6	20.7	21.9
<i>Industry —</i>									
Agriculture, forestry and fishing	*0.5	*0.8	*1.4	18.3	22.3	40.6	*3.0	*3.8	*3.4
Mining	*1.3	*0.0	*1.3	5.7	*1.5	7.3	*23.0	..	*18.1
Manufacturing	50.3	6.3	56.6	184.6	67.0	251.7	27.2	9.5	22.5
Electricity, gas and water supply	*4.1	*0.5	*4.7	6.9	*0.9	7.7	*60.6	*61.9	*60.7
Construction	*1.5	*0.6	*2.1	21.6	16.5	38.1	*7.0	*3.6	*5.5
Wholesale trade	*4.6	*1.5	6.0	94.0	39.7	133.7	*4.9	*3.7	4.5
Retail trade	36.8	102.1	138.9	170.4	358.2	528.6	21.6	28.5	26.3
Accommodation, cafes and restaurants	11.4	16.0	27.4	65.1	129.8	195.0	17.5	12.3	14.1
Transport and storage	14.1	*3.1	17.2	57.0	15.8	72.7	24.8	*19.6	23.7
Communication services	18.8	*2.8	21.6	37.9	9.2	47.1	49.5	*30.8	45.9
Finance and insurance	48.1	21.2	69.2	119.7	50.7	170.4	40.2	41.7	40.6
Property and business services	11.5	10.9	22.5	214.1	118.0	332.1	5.4	9.3	6.8
Government administration and defence	44.4	11.3	55.8	114.2	37.5	151.6	38.9	30.2	36.8
Education	139.5	49.5	189.0	228.5	160.2	388.7	61.0	30.9	48.6
Health and community services	113.2	79.7	192.9	273.8	293.8	567.6	41.4	27.1	34.0
Cultural and recreational services	8.5	9.9	18.4	40.6	41.2	81.8	21.0	23.9	22.5
Personal and other services	15.1	*3.5	18.6	69.7	49.9	119.7	21.7	*7.1	15.6
<i>Permanent or casual employees —</i>									
Permanent	508.7	204.1	712.8	1,567.0	573.4	2,140.4	32.5	35.6	33.3
Casual	15.1	115.7	130.9	155.1	838.9	994.0	9.8	13.8	13.2
<i>Sector —</i>									
Public	293.9	105.3	399.2	532.8	271.8	804.6	55.2	38.7	49.6
Private	230.0	214.5	444.5	1,189.3	1,140.6	2,329.8	19.3	18.8	19.1
<i>Size of location (employees) —</i>									
Less than 10	36.7	25.1	61.7	354.1	418.4	772.6	10.4	6.0	8.0
10 — 19	50.5	24.9	75.4	221.5	205.3	426.8	22.8	12.1	17.7
20 — 99	156.1	103.8	260.0	458.2	366.1	824.3	34.1	28.4	31.5
100 or more	271.4	151.7	423.0	650.7	358.5	1,009.2	41.7	42.3	41.9
Don't know	9.2	14.3	23.5	37.4	64.1	101.6	24.5	22.3	23.1
<i>Total</i>	<i>523.8</i>	<i>319.8</i>	<i>843.7</i>	<i>1,722.0</i>	<i>1,412.4</i>	<i>3,134.4</i>	<i>30.4</i>	<i>22.6</i>	<i>26.9</i>
	— \$ —								
Median weekly earnings in main job	581	282	483	533	228	409
Mean weekly earnings in main job	646	315	520	606	264	451

TABLE 15. TRADE UNION MEMBERSHIP OF EMPLOYEES IN MAIN JOB—continued

	Member of a trade union		Total(a)		Proportion of all employees who were trade union members				
	Full-time employees	Part-time employees	Full-time employees	Part-time employees	Full-time employees	Part-time employees	Total		
PERSONS									
	— '000 —				— % —				
<i>Age group (years) —</i>									
15 — 19	32.4	68.3	100.7	188.4	352.9	541.3	17.2	19.4	18.6
20 — 24	144.9	50.2	195.0	626.3	266.5	892.8	23.1	18.8	21.8
25 — 34	458.2	69.4	527.6	1,480.3	377.6	1,857.8	31.0	18.4	28.4
35 — 44	508.1	117.0	625.1	1,330.3	448.0	1,778.2	38.2	26.1	35.2
45 — 54	415.6	80.0	495.6	1,054.1	326.7	1,380.8	39.4	24.5	35.9
55 — 59	99.9	14.4	114.3	251.1	77.6	328.6	39.8	18.6	34.8
60 and over	43.1	8.9	52.0	125.3	67.2	192.5	34.4	13.2	27.0
<i>Weekly earnings in main job (\$) —</i>									
Under 160	8.2	98.2	106.4	61.0	668.9	729.9	13.5	14.7	14.6
160 and under 320	44.2	128.8	173.0	246.5	581.8	828.3	17.9	22.1	20.9
320 and under 480	241.6	94.0	335.5	941.4	377.0	1,318.4	25.7	24.9	25.5
480 and under 640	479.1	43.0	522.1	1,360.6	129.8	1,490.4	35.2	33.2	35.0
640 and under 800	324.7	18.2	342.9	811.4	43.6	855.0	40.0	41.7	40.1
800 and under 960	277.3	6.2	283.5	596.8	17.2	614.1	46.5	35.8	46.2
960 and over	243.5	*3.8	247.3	717.8	16.0	733.7	33.9	*23.6	33.7
Could not be determined(b)	83.5	16.1	99.5	320.5	82.0	402.4	26.0	19.6	24.7
<i>Industry —</i>									
Agriculture, forestry and fishing	9.9	*1.3	11.1	114.1	42.0	156.1	8.6	*3.0	7.1
Mining	33.0	*0.5	33.5	73.7	*2.6	76.3	44.7	*19.4	43.9
Manufacturing	364.2	14.0	378.2	926.9	107.1	1,034.1	39.3	13.0	36.6
Electricity, gas and water supply	44.2	*0.8	45.0	66.0	*2.2	68.3	66.9	*38.1	65.9
Construction	111.2	*3.8	115.0	306.6	36.8	343.4	36.3	*10.4	33.5
Wholesale trade	52.2	*3.0	55.2	375.4	59.9	435.3	13.9	*4.9	12.7
Retail trade	83.2	139.1	222.3	477.4	520.5	997.8	17.4	26.7	22.3
Accommodation, cafes and restaurants	28.9	24.5	53.4	157.7	187.7	345.4	18.3	13.1	15.5
Transport and storage	138.8	8.8	147.6	273.8	36.9	310.7	50.7	23.8	47.5
Communication services	79.4	*4.0	83.4	125.7	13.8	139.4	63.2	*29.3	59.8
Finance and insurance	85.8	21.3	107.2	245.4	56.5	301.9	35.0	37.8	35.5
Property and business services	53.4	19.2	72.6	554.4	169.2	723.7	9.6	11.3	10.0
Government administration and defence	133.9	11.7	145.6	289.9	44.6	334.4	46.2	26.2	43.5
Education	229.1	54.5	283.6	383.4	191.2	574.6	59.8	28.5	49.3
Health and community services	165.0	83.9	248.9	401.0	317.8	718.8	41.1	26.4	34.6
Cultural and recreational services	24.8	13.0	37.8	96.6	62.4	159.0	25.7	20.9	23.8
Personal and other services	65.1	*4.9	70.0	187.9	65.1	253.0	34.7	*7.5	27.7
<i>Permanent or casual employees —</i>									
Permanent	1,630.6	231.6	1,862.2	4,517.4	659.3	5,176.6	36.1	35.1	36.0
Casual	71.5	176.7	248.1	538.4	1,257.1	1,795.5	13.3	14.1	13.8
<i>Sector —</i>									
Public	726.6	116.7	843.3	1,220.0	322.2	1,542.2	59.6	36.2	54.7
Private	975.5	291.5	1,267.0	3,835.8	1,594.2	5,430.0	25.4	18.3	23.3
<i>Size of location (employees) —</i>									
Less than 10	143.2	32.5	175.8	1,133.0	571.6	1,704.5	12.6	5.7	10.3
10 — 19	149.3	31.9	181.2	624.8	283.1	907.8	23.9	11.3	20.0
20 — 99	466.9	141.5	608.4	1,296.4	502.1	1,798.4	36.0	28.2	33.8
100 or more	892.9	180.8	1,073.7	1,861.2	455.9	2,317.1	48.0	39.6	46.3
Don't know	49.8	21.5	71.3	140.4	103.8	244.2	35.4	20.7	29.2
Total	1,702.1	408.3	2,110.3	5,055.8	1,916.4	6,972.1	33.7	21.3	30.3
	— \$ —								
Median weekly earnings in main job	636	271	577	581	214	499
Mean weekly earnings in main job	721	313	642	702	261	579

(a) Includes persons who were not members of a trade union and persons for whom trade union membership information was not collected. (b) See paragraphs 15 and 16 of the Explanatory Notes.

TABLE 16. POPULATIONS BY STATE OR TERRITORY OF USUAL RESIDENCE
(^{'000})

	<i>NSW</i>	<i>Vic.</i>	<i>Qld.</i>	<i>SA.</i>	<i>WA</i>	<i>Tas.</i>	<i>NT</i>	<i>ACT</i>	<i>Aust.</i>
MALES									
<i>Population 1 :</i> Employees	1,276.5	973.7	699.7	293.2	390.8	90.3	39.8	73.7	3,837.7
<i>Population 2 :</i> Employees who worked full time in their main job	1,113.2	846.0	602.4	252.1	345.2	77.0	35.4	62.5	3,333.8
<i>Population 3 :</i> Employees who were full-time workers	1,132.7	856.6	614.4	258.6	350.9	78.9	35.8	64.0	3,391.9
<i>Population 4 :</i> Employees who worked full time in their main job who were born overseas	317.7	233.8	104.2	58.9	109.8	6.2	7.0	15.4	853.2
<i>Population 5 :</i> Employees who worked as an employee in the reference week in their second job	35.1	30.9	18.5	9.9	8.7	2.1	*1.3	2.2	108.6
FEMALES									
<i>Population 1 :</i> Employees	1,039.8	797.3	573.8	244.2	307.8	69.5	35.6	66.4	3,134.4
<i>Population 2 :</i> Employees who worked full time in their main job	604.7	439.4	313.2	110.5	159.2	31.2	23.0	40.7	1,722.0
<i>Population 3 :</i> Employees who were full-time workers	616.6	456.0	324.8	122.4	166.2	32.4	23.7	42.8	1,785.0
<i>Population 4 :</i> Employees who worked full time in their main job who were born overseas	164.0	108.0	53.5	22.4	46.8	3.4	5.9	8.6	412.5
<i>Population 5 :</i> Employees who worked as an employee in the reference week in their second job	43.0	30.2	27.1	10.1	18.5	3.3	*2.0	4.0	138.1
PERSONS									
<i>Population 1 :</i> Employees	2,316.3	1,771.0	1,273.4	537.5	698.7	159.8	75.4	140.1	6,972.1
<i>Population 2 :</i> Employees who worked full time in their main job	1,717.9	1,285.4	915.6	362.6	504.4	108.3	58.4	103.2	5,055.8
<i>Population 3 :</i> Employees who were full-time workers	1,749.4	1,312.6	939.1	381.0	517.2	111.3	59.5	106.7	5,176.8
<i>Population 4 :</i> Employees who worked full time in their main job who were born overseas	481.7	341.8	157.8	81.2	156.7	9.6	12.9	24.0	1,265.7
<i>Population 5 :</i> Employees who worked as an employee in the reference week in their second job	78.1	61.1	45.6	19.9	27.2	5.4	3.2	6.2	246.7

TABLE 17. MEAN WEEKLY EARNINGS IN MAIN JOB OF POPULATIONS BY USUAL RESIDENCE
(S)

	NSW	Vic.	Qld.	SA	WA	Tas.	NT	ACT	Aust.
MALES									
<i>Population 1 :</i> Employees	712	675	654	622	728	591	719	781	685
<i>Population 2 :</i> Employees who worked full time in their main job	779	744	715	681	799	646	781	881	752
<i>Population 3 :</i> Employees who were full-time workers(a)	782	746	714	683	795	648	788	875	753
<i>Population 4 :</i> Employees who worked full time in their main job who were born overseas	767	778	752	714	860	702	731	938	779
<i>Population 5 :</i> Employees who worked as an employee in the reference week in their second job	592	547	543	495	566	*554	*694	*769	564
FEMALES									
<i>Population 1 :</i> Employees	479	448	435	426	402	395	480	546	451
<i>Population 2 :</i> Employees who worked full time in their main job	629	601	587	605	556	571	602	708	606
<i>Population 3 :</i> Employees who were full-time workers(a)	632	606	588	598	560	572	603	699	608
<i>Population 4 :</i> Employees who worked full time in their main job who were born overseas	654	588	579	638	568	*610	617	698	616
<i>Population 5 :</i> Employees who worked as an employee in the reference week in their second job	364	324	351	310	305	*375	*395	*370	342
PERSONS									
<i>Population 1 :</i> Employees	607	571	555	532	584	505	606	669	579
<i>Population 2 :</i> Employees who worked full time in their main job	726	695	671	658	722	624	711	812	702
<i>Population 3 :</i> Employees who were full-time workers(a)	729	697	670	655	719	625	714	804	703
<i>Population 4 :</i> Employees who worked full time in their main job who were born overseas	728	717	693	694	771	668	680	850	725
<i>Population 5 :</i> Employees who worked as an employee in the reference week in their second job	465	432	427	402	390	*436	*516	513	438

(a) For Population 3 mean weekly earnings in all jobs are shown.

EXPLANATORY NOTES

INTRODUCTION

1 This survey was conducted as a supplement to the monthly Labour Force Survey (LFS). Respondents to the LFS who fell within the scope of the supplementary survey were asked further questions.

2 For further information about the LFS, see *Labour Force, Australia* (Cat. no. 6203.0). This publication contains information about survey design, sample redesign, scope, coverage and population benchmarks relevant to the LFS, which also apply to supplementary surveys. It also contains definitions of demographic and labour force characteristics, and information about telephone interviewing which are relevant to both the LFS and supplementary surveys.

3 In addition to the information about weekly earnings of employees, this publication also presents information about standard employment benefits and trade union membership.

SCOPE

4 In addition to those already excluded from the LFS, students at boarding schools, patients in hospitals, residents of homes (e.g. retirement homes, homes for the handicapped), and inmates of prisons are further excluded from all supplementary surveys.

5 Also out of scope were some 76,000 persons living in remote and sparsely settled parts of Australia. The exclusion of these persons has only a minor impact on aggregate estimates for individual States and Territories.

6 This survey was restricted to employees aged 15 or more unless they worked solely for payment in kind in their main job.

COVERAGE

7 The estimates in this publication relate to persons covered by the survey in August 1997. In the LFS, coverage rules are applied which aim to ensure that each person is associated with only one dwelling, and hence has only one chance of selection in the survey. See *Labour Force, Australia* (Cat. no. 6203.0).

RELIABILITY OF THE ESTIMATES

8 Estimates in this publication are subject to sampling and non-sampling errors:

- Sampling error is the difference between the published estimate and the value that would have been produced if all dwellings had been included in the survey. For further information on sampling error, refer to the Technical Notes.
- Non-sampling errors are inaccuracies that occur because of imperfections in reporting by respondents and interviewers, and errors made in coding and processing data. These inaccuracies may occur in any enumeration, whether it be a full count or a sample. Every effort is made to reduce the non-sampling error to a minimum by careful design of questionnaires, intensive training and supervision of interviewers and efficient processing procedures.

SEASONAL FACTORS

9 The estimates refer to information collected in the survey month and, due to seasonal factors, may not be representative of other months of the year.

CHANGES IN CLASSIFICATION

10 From August 1996, occupation data are classified according to the second edition of the Australian Standard Classification of Occupations (ASCO). For more detailed information, see the *Information Paper: ASCO — Australian Standard Classification of Occupations* (Cat. no. 1221.0). A concordance between the new and the old versions of ASCO is not yet available.

NOTES ON ESTIMATES

11 In August 1997 there were 50,400 persons for whom sector of main job could not be determined. These persons were included in the private sector for the purpose of this publication.

12 In August 1997, persons refusing to answer questions about their weekly earnings represented 402,000 in the population. These persons have been classified to the 'could not be determined' category in this publication.

13 Care should be taken when using estimates of mean weekly earnings. Employees refusing to answer questions about their earnings are excluded from estimates of mean weekly earnings. These employees have demographic and employment characteristics which differ on average from the rest of the employee population. It is likely that the exclusion of these persons has resulted in a slight downward bias on mean weekly earnings estimates.

COMPARABILITY OF TIME SERIES

14 Revisions are made to population benchmarks for the LFS after each five-yearly Census of Population and Housing. The last such revision was made in February 1994 to take account of the results of the 1991 Census of Population and Housing. Estimates from supplementary surveys conducted after February 1994 are therefore based on revised population benchmarks.

15 Supplementary surveys are not always conducted on the full LFS sample. Apart from scope exclusions, such as those listed on the previous page, since August 1994, the sample available for supplementary surveys has been restricted to seven-eighths of the LFS sample. Since it was introduced, this survey has been conducted on various proportional samples and therefore sampling error associated with previous surveys may vary from sampling error for this survey, which was conducted on a seven-eighths sample.

16 In August 1990, persons aged 70 and over were excluded from this supplementary survey, restricting the age of respondents to 15–69 years. The scope of surveys since 1991 and surveys run prior to August 1990 include all persons aged 70 years and over.

COMPARABILITY OF
TIME SERIES
continued

17 Care should be taken when comparing the movements in mean weekly earnings that include the July 1991 and August 1997 surveys. The usual period between surveys is 12 months, however in 1991 the elapsed time was 11 months (August 1990 to July 1991) and 13 months (July 1991 to August 1992) while in 1997 the elapsed time was 2 years (August 1995 to August 1997).

COMPARABILITY WITH
MONTHLY LABOUR FORCE
SURVEY STATISTICS

18 Due to differences in the scope and sample size of this supplementary survey and that of the LFS, the estimation procedure may lead to small variations between labour force estimates from this survey and those from the LFS.

COMPARABILITY WITH
AVERAGE WEEKLY
EARNINGS, STATES AND
AUSTRALIA (6302.0)

19 The survey was conducted primarily to obtain statistics on the distribution of earnings of employees classified by characteristics such as marital status, sex, age and whether the earnings came from the main job or a second job. Caution should be exercised when comparing the means (averages) in these tables with estimates of average weekly earnings included in the quarterly publication *Average Weekly Earnings, States and Australia* (Cat. no. 6302.0) which are compiled from a survey of employers. There are important differences in the scope and methodology of the two surveys.

20 The quarterly Survey of Average Weekly Earnings excludes employees in the industries of Agriculture, Forestry and Fishing (Australian and New Zealand Standard Industrial Classification (ANZSIC) Division A) and Private Households Employing Staff (ANZSIC Subdivision 97) both of which are included in this household survey. Data from the quarterly Survey of Average Weekly Earnings are collected from employers who fill in a mailed questionnaire giving details of their employees' weekly earnings. For this household survey, respondents are either interviewed personally at their dwelling or another adult member of their household responds on their behalf.

21 The methodology used in this household survey is associated with sources of non-sample error not found in surveys of employers (and vice versa) which may also explain some of the differences between the results of the two surveys.

PREVIOUS SURVEYS

22 Similar surveys have been conducted annually since August 1975, except in 1991 when the survey was conducted in July and in 1996 when the survey was not collected. Results have been given in previous issues of this publication *Weekly Earnings of Employees (Distribution), Australia* (Cat. no. 6310.0) or the standard data service *Weekly Earnings of Employees (Distribution), Australia* (Cat. no. 6310.0.40.001).

RELATED PUBLICATIONS

23 Other publications which may be of interest include:

- *Average Weekly Earnings, States and Australia* (Cat. no. 6302.0)
- *Career Experience, Australia* (Cat. no. 6254.0)
- *Employment Benefits, Australia* (Cat. no. 6334.0.40.001) discontinued
- *Multiple Jobholding, Australia* (Cat. no. 6216.0)
- *Persons Employed at Home, Australia* (Cat. no. 6275.0)
- *Superannuation, Australia* (Cat. no. 6319.0)
- *Trade Union Members, Australia* (Cat. no. 6325.0)
- *Working Arrangements, Australia* (Cat. no. 6342.0).

24 Current publications produced by the ABS are listed in the *Catalogue of Publications and Products* (Cat. no. 1101.0). The ABS also issues, on Tuesdays and Fridays, a *Release Advice* (Cat. no. 1105.0) which lists publications to be released in the next few days. The Catalogue and Release Advice are available from any ABS office or from the ABS Information Service on the World Wide Web, <http://www.abs.gov.au>.

NEXT SURVEY

25 The ABS plans to conduct this survey again in August 1998.

TECHNICAL NOTES

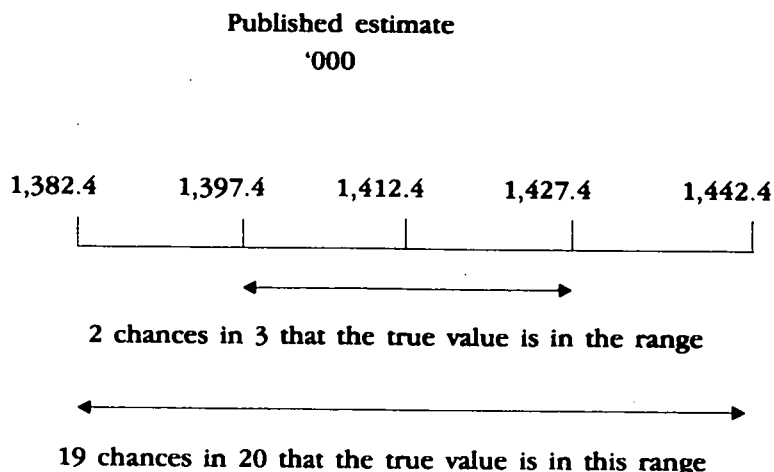
INTRODUCTION

1 Since the estimates in this publication are based on information obtained from occupants of a sample of dwellings, they are subject to sampling variability, that is, they may differ from those that would have been produced if all dwellings had been included in the survey. One measure of the likely difference is given by the standard error (SE), which indicates the extent to which an estimate might have varied by chance because only a sample of dwellings was included. There are about two chances in three that a sample estimate will differ by less than one SE from the number that would have been obtained if all dwellings had been included, and about 19 chances in 20 that the difference will be less than two SEs. Another measure of the likely difference is the relative standard error (RSE), which is obtained by expressing the SE as a percentage of the estimate.

2 Space does not allow for the separate indication of the SEs of all estimates in this publication. Since they are averages based on calculations for a limited number of past surveys over a wide range of labour force characteristics these numbers will not give a precise measure of the SE of a particular estimate but they will provide an indication of its magnitude.

CALCULATION OF STANDARD ERROR

3 An example of the calculation and the use of SEs in relation to estimates of persons is as follows. Table 5 shows the estimated number of female part-time employees in main job in Australia was 1,412,400. Since this estimate is between 1,000,000 and 2,000,000 table T1 shows that the SE for Australia will lie between 13,400 and 17,350 and can be approximated by interpolation as 15,000 (rounded to the nearest 100). Therefore, there are about two chances in three that the value that would have been produced if all dwellings had been included in the survey will fall in the range 1,397,400 to 1,427,400 and about 19 chances in 20 that the value will fall within the range 1,382,400 to 1,442,400. This example is illustrated in the diagram below:



CALCULATION OF
STANDARD ERROR
continued

4 As can be seen from the SE table, the smaller the estimate, the higher is the RSE. Very small estimates are thus subject to such high SEs (relative to the size of the estimate) as to detract seriously from their value for most reasonable uses. In these tables, only estimates with RSEs less than 25% are considered sufficiently reliable for most purposes. However, estimates with larger RSEs have been included and are preceded by an asterisk (e.g. *3.4) to indicate they are subject to high SEs and should be used with caution.

Average and medians

5 The RSEs of estimates of *mean and median weekly earnings* are obtained by first finding the RSE of the estimate of the total number of persons contributing to the estimate (see table T2) and then multiplying the number so obtained by the following relevant factors:

Average duration of time spent looking for work: 0.9

Median duration of time spent looking for work: 1.0

6 Consider median weekly earnings of female part-time employees in main job were \$228, with an estimate of 1,412,400 female part-time employees. The SE can be approximated by interpolation as 15,000 which is 1.1% as a RSE. The factor of 1.0 (see paragraph 5) is applied to the RSE of 1.1% to obtain 1.1%. Therefore the SE for median weekly earnings of female part-time employees in main job is 1.1% of \$228, i.e. about \$2.50. So there are two chances in three that the median weekly earnings is between \$225.50 and \$230.50, and about 19 chances in 20 that it is between \$223.00 and \$233.00.

Proportions and percentages

7 Proportions and percentages formed from the ratio of two estimates are also subject to sampling errors. The size of the error depends on the accuracy of both the numerator and the denominator. A formula to approximate the RSE of a proportion is given below:

$$RSE(x/y) = \sqrt{[RSE(x)]^2 - [RSE(y)]^2}$$

8 Considering the example from paragraph 3 above, the 1,412,400 female part-time employees in the main job, represent 45.0% of the 3,134,400 female employees. The SE of 3,134,400 is approximately 19,846 so the RSE is 0.6%. The RSE for 1,412,400 is 1.1%. Applying the above formula, the RSE of the proportion is $\sqrt{(1.1)^2 - (0.6)^2}$ or 0.9%, giving a SE for the proportion (45.0%) of 0.4 percentage point. Therefore, there are about two chances in three that the proportion of female part-time employees was between 44.6% and 45.4% and 19 chances in 20 that the proportion is within the range 44.2% to 45.8%.

Differences **9** Published estimates may also be used to calculate the difference between two survey estimates (of numbers or percentages). Such an estimate is subject to sampling error. The sampling error of the difference between two estimates depends on their SEs and the relationship (correlation) between them. An approximate SE of the difference between two estimates (x-y) may be calculated by the following formula:

$$SE(x - y) = \sqrt{[SE(x)]^2 + [SE(y)]^2}$$

10 While this formula will only be exact for differences between separate and uncorrelated characteristics or subpopulations, it is expected to provide a good approximation for all differences likely to be of interest in this publication.

11 The imprecision due to sampling variability, which is measured by the SE, should not be confused with inaccuracies that may occur because of imperfections in reporting by interviewers and respondents and errors made in coding and processing data. Inaccuracies of this kind are referred to as the non-sampling error, and they may occur in any enumeration, whether it be a full count or a sample. Every effort is made to reduce the non-sampling error to a minimum by careful design of questionnaires, intensive training and supervision of interviewers and efficient operating procedures.

12 Standard errors contained in table T1 are applicable to all estimates from this survey. The levels at which averages and medians have a RSE of 25% are shown in table T2.

T1 STANDARD ERRORS OF ESTIMATES

Size of estimate (persons)	NSW no.	Vic. no.	Qld no.	SA no.	WA no.	Tas. no.	NT no.	ACT no.	Aust no.	RSE %
100	100	150	90
200	240	210	220	140	200	130	220	110.0
300	360	330	290	260	270	170	240	160	270	90.3
500	480	430	380	330	340	230	300	200	370	74.0
700	570	510	450	390	400	270	350	240	440	62.9
1 000	680	610	540	470	480	320	410	280	540	54.0
1 500	830	750	660	570	580	380	490	330	670	44.7
2 000	950	870	760	650	660	430	560	370	790	39.5
2 500	1 060	970	840	720	730	470	620	410	890	35.6
3 000	1 160	1 060	920	780	790	510	670	440	980	32.7
3 500	1 250	1 140	990	840	850	550	720	470	1 060	30.3
4 000	1 330	1 210	1 050	890	900	580	770	500	1 130	28.3
5 000	1 450	1 350	1 150	1 000	1 000	650	850	550	1 250	25.0
7 000	1 700	1 600	1 350	1 150	1 150	700	1 000	650	1 550	21.4
10 000	2 050	2 850	1 600	1 350	1 350	800	1 150	750	1 800	18.0
15 000	2 450	2 250	1 900	1 600	1 600	950	1 400	850	2 200	14.7
20 000	2 750	2 550	2 150	1 800	1 800	1 050	1 600	950	2 500	12.5
30 000	3 300	3 000	2 600	2 100	2 150	1 200	1 950	1 100	3 050	10.2
40 000	3 700	3 400	2 900	2 350	2 400	1 300	2 250	1 250	3 500	8.8
50 000	4 050	3 750	3 200	2 600	2 650	1 400	2 500	1 350	3 850	7.7
100 000	5 400	4 950	4 250	3 400	3 500	1 650	3 450	1 750	5 250	5.3
150 000	6 350	5 850	4 950	3 950	4 050	1 850	4 150	2 000	6 250	4.2
200 000	7 100	6 500	5 550	4 350	4 550	1 950	4 750	2 200	7 050	3.5
300 000	8 300	7 600	6 450	5 050	5 250	2 150	..	2 550	8 350	2.8
500 000	10 050	9 150	7 800	6 050	6 350	2 400	10 250	2.1
1 000 000	12 850	11 700	10 050	7 650	8 100	13 400	1.3
2 000 000	16 350	14 800	12 750	9 550	10 250	17 350	0.9
5 000 000	22 050	19 800	17 200	23 950	0.5
10 000 000	30 150	0.3

T2 LEVELS AT WHICH ESTIMATES HAVE A RELATIVE STANDARD ERROR OF 25%

	NSW	Vic.	Qld.	SA	WA	Tas.	NT	ACT	Aust.
Median weekly earnings	6 800	5 800	4 400	3 200	3 300	1 500	2 500	1 200	5 200
Mean weekly earnings	5 700	4 800	3 600	2 700	2 800	1 300	2 000	1 000	4 300

GLOSSARY

Casual employees in main job	Employees who were not entitled to either <i>paid holiday leave</i> or <i>sick leave</i> .
Dependants	All family members under 15 years of age; all sons or daughters aged 15–19 years attending school or aged 15–24 years attending a tertiary educational institution full time, except those classified as husbands, wives or lone parents.
Employees	Employed persons aged 15 years and over who worked in their main job for an employer for wages or salary or in their own business (either with or without employees), if that business was a limited liability company. Persons who are paid solely by payment in kind are excluded.
Family	<p>Two or more related persons (comprises relationships by blood, marriage or adoption) usually resident in the same household at the time of the survey. A family comprises a married couple or a family head as defined, together with any persons having any of the following relationships to them:</p> <ul style="list-style-type: none">▪ sons or daughters of any age, if not married and with no children of their own present;▪ other relatives if not accompanied by a spouse, sons or daughters, or parents of their own; or▪ any children under 15 years of age who do not have a parent present. <p>Further details on the determination of family relationships are given in <i>Labour Force, Australia</i> (Cat. no. 6203.0).</p>
Full-time employees in main job	All employees for whom 'full time' was the response to the question 'Is your main job full time or part time?'
Full-time workers	Employees who usually worked a total of 35 hours or more a week in all jobs and others who usually work less than 35 hours a week but worked 35 hours or more during the reference week.
Hours paid for in main job	The number of hours for which employees were paid not necessarily the number of hours actually worked during the reference week (e.g. an employee on paid leave for the week was asked to report the number of hours for which they were paid).
Hours worked	The number of hours actually worked during the reference week.
Industry	Classified using the <i>Australian and New Zealand Standard Industrial Classification (ANZSIC), 1993</i> (Cat. no. 1292.0). In this publication, industry relates to the main job and is shown at the ANZSIC Division level.

Main English speaking countries	Comprises the United Kingdom, Ireland, Canada, South Africa, the United States of America and New Zealand.
Main job	The job in which most hours were usually worked.
Mean weekly earnings	The amount obtained by dividing the total earnings of a group by the number of employees in that group.
Median weekly earnings	The amount which divides the distribution of employees into two equal groups, one having earnings above and the other below that amount.
Member of a trade union	Employees with membership in a trade union in conjunction with their current job.
Multiple jobholder	Employed persons who, during the reference week: <ul style="list-style-type: none"> ▪ worked in a second job or held a second job from which they were absent because of holidays, sickness or any other reason; and ▪ were an employee in at least one of their jobs.
Occupation	Unless otherwise specified, all occurrences of occupation in this publication relate to Major Group as defined by the <i>Information Paper: ASCO — Australian Standard Classification of Occupations</i> (Cat. no. 1221.0)
Part-time employees in main job	All employees for whom 'part time' was the response to the question 'Is your main job full time or part time?'
Part-time workers	Employees who usually worked a total of less than 35 hours a week in all jobs and who did so during the reference week.
Permanent employees in main job	Employees who were entitled to <i>paid holiday leave</i> or <i>sick leave</i> in their main job.
Second job	A job, other than the main job, in which some hours were worked during the reference week.
Sector of main job	Is used to classify a respondent's employer as a public or private enterprise. Public sector includes local government authorities, government departments, agencies and authorities created by, or reporting to, the Commonwealth Parliament and State Parliaments.
Size of location	The number of persons employed at the location of the respondent's main job.
Standard benefit	Provision by employer of holiday leave, sick leave, long service leave or superannuation benefit.
Superannuation	Membership of a superannuation or retirement benefits scheme, arranged or provided by the person's current employer even if the employer did not contribute to the fund.

Weekly earnings Amount of 'last total pay' from wage and salary jobs prior to the interview (i.e. before taxation and other deductions had been made). For persons paid other than weekly, earnings were converted to a weekly equivalent. No adjustment was made for any back payment of wage increases or prepayment of leave, etc.

POPULATIONS AND DATA ITEMS AVAILABLE FROM THIS SURVEY

POPULATIONS

- POPULATION 1: Employees
- POPULATION 2: Employees who worked full time in their main job
- POPULATION 3: Employees who were full-time workers
- POPULATION 4: Employees who worked full time in their main job and were born overseas
- POPULATION 5: Employees who worked as an employee in the reference week in their second job.

DATA ITEM	POPULATIONS	DATA ITEM	POPULATIONS
1 STATE OF USUAL RESIDENCE	ALL	6B RELATIONSHIP IN HOUSEHOLD (2)	ALL
New South Wales		Family member	
Victoria		Husband or wife	
Queensland		With children under 15	
South Australia		Without children under 15	
Western Australia		Lone parent	
Tasmania		With children under 15	
Northern Territory		With dependent students but without children under 15	
Australian Capital Territory		Without dependants	
2 AREA OF USUAL RESIDENCE	ALL	Dependent student	
Metropolitan		Non-dependent child	
Non-metropolitan		Other family person	
3 REGION OF USUAL RESIDENCE	ALL	Non-family member	
Standard labour force dissemination regions		Lone person	
4 SEX	ALL	Not living alone	
Males		Family status not determined	
Females		7A BIRTHPLACE AND PERIOD OF ARRIVAL	ALL
5 MARITAL STATUS	ALL	Born in Australia	
Married		Born outside Australia	
Not-married		Before 1971	
6A RELATIONSHIP IN HOUSEHOLD (1)	ALL	1971-80	
Family member		1981-90	
Husband or wife		1991 to survey date	
With dependants		7B BIRTHPLACE (1)	ALL
Without dependants		Born in Australia	
Lone parent		Born outside Australia	
With dependants		Born in main English speaking countries	
Without dependants		Born in other countries	
Dependent student			
Non-dependent child			
Other family person			
Non-family member			
Lone person			
Not living alone			
Family status not determined			

DATA ITEMS	POPULATIONS
7C BIRTHPLACE (2)	ALL
Born in Australia	
Born outside Australia	
Oceania and Antarctica	
New Zealand	
Europe and the former USSR	
Germany	
Greece	
Italy	
Netherlands	
United Kingdom and Ireland	
Balance of Europe and the former USSR	
The Middle East and North Africa	
Lebanon	
Southeast Asia	
Malaysia	
Philippines	
Viet Nam	
Northeast Asia	
China(a)	
Southern Asia	
Northern America	
South America, Central America and the Caribbean	
Africa (excluding North Africa)	
(a) Includes Hong Kong SAR.	
8 AGE GROUP (YEARS)	ALL
15-19	
20-24	
25-34	
35-44	
45-54	
55-64	
65 and over	
9 FULL-TIME AND PART-TIME EMPLOYEES IN MAIN JOB	ALL
Full-time	
Part-time	
10 FULL-TIME AND PART-TIME WORKERS	ALL
Full-time	
Part-time	
11 OCCUPATION	ALL
Managers and administrators	
Professionals	
Associate professionals	
Tradespersons and related workers	
Advanced clerical and service workers	
Intermediate clerical, sales and service workers	
Intermediate production and transport workers	
Elementary clerical, sales and service workers	
Labourers and related workers	

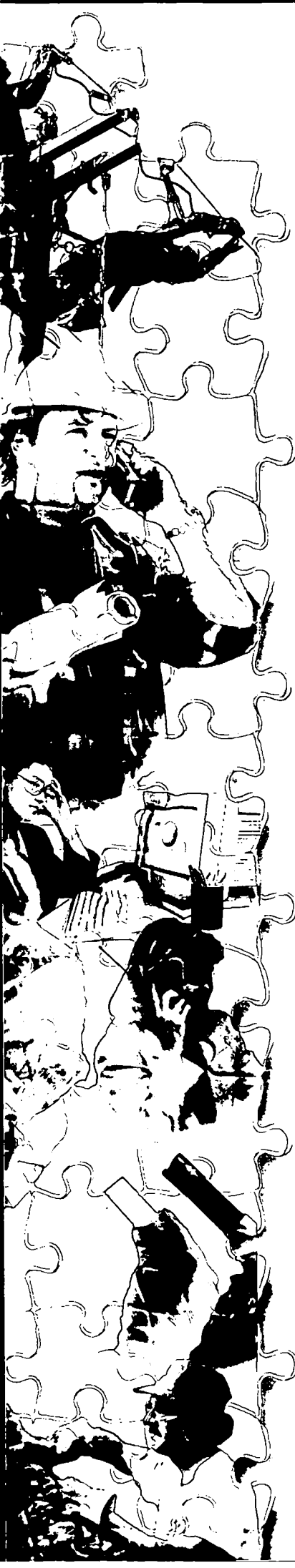
DATA ITEM	POPULATIONS
12 INDUSTRY	ALL
Agriculture, forestry, fishing	
Mining	
Manufacturing	
Electricity, gas and water supply	
Construction	
Wholesale trade	
Retail trade	
Accommodation, cafes and restaurants	
Transport and storage	
Communication services	
Finance and insurance	
Property and business services	
Government administration and defence	
Education	
Health and community services	
Cultural and recreational services	
Personal and other services	
13 HOURS WORKED IN MAIN JOB	ALL
0 or less than 1	
1 or more	
1-14	
15-19	
20-24	
25-29	
30-34	
35	
36-39	
40	
41-44	
45-48	
49 and over	
14 HOURS WORKED IN SECOND JOB	5
0 or less than 1	
1 or more	
1-4	
5-9	
10 and over	
15 HOURS WORKED IN ALL JOBS	ALL
0 or less than 1	
1 or more	
1-14	
15-19	
20-24	
25-29	
30-34	
35	
36-39	
40	
41-44	
45	
45-48	
49 and over	

DATA ITEM	POPULATIONS
16 HOURS PAID FOR IN MAIN JOB	ALL
1-14	
15-19	
20-29	
30-34	
35-39	
40	
41-44	
45-48	
49 and over	
Could not be determined	
17 SECTOR IN MAIN JOB	ALL
Public	
Private	
Could not be determined	
18 WEEKLY EARNINGS IN MAIN JOB(\$)	ALL
Under 40	
40 and under 80	
80 and under 120	
120 and under 160	
160 and under 200	
200 and under 240	
240 and under 280	
280 and under 320	
320 and under 360	
360 and under 400	
400 and under 440	
440 and under 480	
480 and under 520	
520 and under 560	
560 and under 600	
600 and under 640	
640 and under 680	
680 and under 720	
720 and under 760	
760 and under 800	
800 and under 840	
840 and under 880	
880 and under 920	
920 and under 960	
960 and under 1000	
1000 and under 1040	
1040 and under 1080	
1080 and over	
Could not be determined	
19 WEEKLY EARNINGS IN SECOND JOB(\$)	5
Under 40	
40 and under 80	
80 and under 120	
120 and under 160	
160 and under 200	
200 and under 240	
240 and under 280	
280 and under 320	
320 and under 360	
360 and under 400	
400 and over	
Could not be determined	

DATA ITEM	POPULATIONS
20 WEEKLY EARNINGS IN ALL JOBS(\$)	ALL
Under 40	
40 and under 80	
80 and under 120	
120 and under 160	
160 and under 200	
200 and under 240	
240 and under 280	
280 and under 320	
320 and under 360	
360 and under 400	
400 and under 440	
440 and under 480	
480 and under 520	
520 and under 560	
560 and under 600	
600 and under 640	
640 and under 680	
680 and under 720	
720 and under 760	
760 and under 800	
800 and under 840	
840 and under 880	
880 and under 920	
920 and under 960	
960 and under 1000	
1000 and under 1040	
1040 and under 1080	
1080 and over	
Could not be determined	
21 FREQUENCY OF PAY IN MAIN JOB	ALL
Weekly	
Fortnightly	
Monthly	
Other	
22 PERMANENT OR CASUAL EMPLOYEES IN MAIN JOB	6
Permanent	
Casual	
23 SIZE OF LOCATION IN MAIN JOB (EMPLOYEES)	6
Less than 10	
10-19	
20-99	
100 or more	
Don't know	
24 NUMBER OF STANDARD BENEFITS	ALL
No benefits	
One or more benefits	
One benefit	
Two benefits	
Three benefit	
Four benefits	
25 TYPE OF STANDARD BENEFIT	ALL
No benefits	
Superannuation	
Holiday leave	
Sick leave	
Long-service leave	

DATA ITEM	POPULATIONS
26 SUPERANNUATION COVERAGE	ALL
Covered	
Not covered	
27 SOURCE OF SUPERANNUATION COVERAGE	ALL
Current employer	
Other source	
Not covered	

DATA ITEMS	POPULATIONS
28 TRADE UNION MEMBERSHIP	ALL
Member of a trade union	
Not a member of a trade union	
Don't know	
29 SCHOOL ATTENDANCE	ALL
Attending school	
Not attending school	



We've got the answers ... we just can't fit them all into this publication!

Is there more information you would like about this topic or other supplementary survey topics?

The good news is that the information is available. In fact, we have volumes of detailed information that cannot be placed into the publications but can provide you with more information on the area of interest to you.

Meeting your needs with customised approach

Detailed information from every supplementary survey is available — that's where we can help. Contact one of our consultants to discuss your needs; after all, it's free. They will provide you with the best possible option to solve your data requests in a written quote, clearly setting out all the costs and time frames.

We can supply you with your requested information in a variety of formats to best suit your needs:

- printed tables
- spreadsheets in a range of formats compatible with your software package
- via E-mail
- floppy disk

Tailored to your specifications

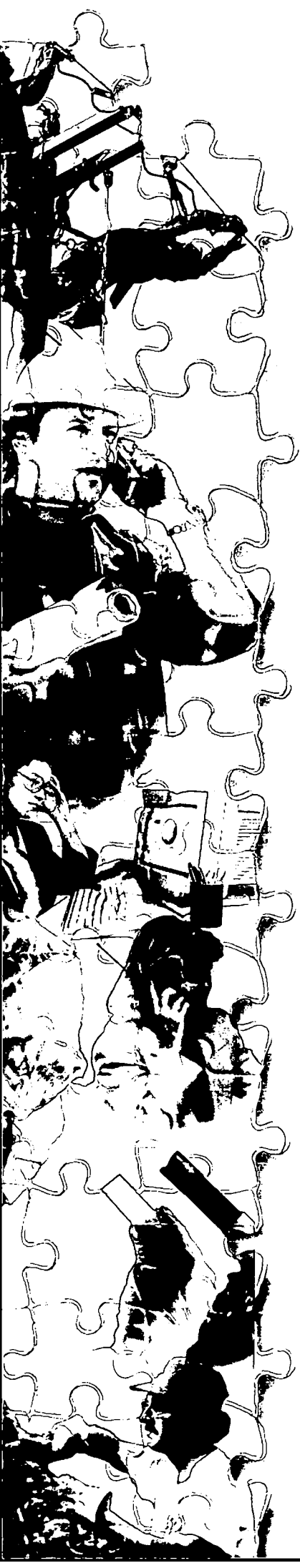
We can mix and match from our extensive data holdings to give a complete statistical picture for your policy, planning, research and commercial analysis needs.

Take a look at the list of populations and data items on the previous pages. They contain a comprehensive list of the variables available that you may be interested in for this supplementary survey. These data items can be cross-classified to your exact requirements, offering you the best cost effective solution. The cost will depend on what you selected and their degree of detail. Payment for this information may be made by credit card or by invoice.

More information is available

Contact Kirrilie Horswill on Canberra (02) 6252 6503 to talk about any inquiries you may have about the information from this survey or to order your special data requirements.

For information about wider range of ABS data, see contact details on the back of the cover.



SUPPLEMENTARY SURVEYS

The supplementary and special surveys collect data on particular aspects of the labour force. The following is an historical list of supplementary and special labour force surveys. The data is available in publication form, by subscription or on request. It may be possible to order unpublished data on the following supplementary and special surveys by contacting the ABS.

TITLE	CATALOGUE NUMBER
■ Career Experience. Irregular. Latest issue November 1996	6254.0
■ Career Paths of Persons with Trade Qualifications. Irregular. Latest issue 1993	6243.0
■ Child Care. Irregular. Latest issue March 1996	4402.0
■ Employment Benefits. Irregular. Latest issue August 1994	6334.0.40.001
■ Job Search Experience of Unemployed Persons. Annual. Latest issue July 1996	6222.0
■ Labour Force Experience. Two-yearly. Latest issue February 1997	6206.0
■ Labour Force Status and Educational Attainment. Final issue February 1994	6235.0
■ Labour Force Status and Other Characteristics of Families. Annual. Latest issue June 1997	6224.0
■ Labour Force Status and Other Characteristics of Migrants. Irregular. Latest issue November 1996	6250.0
■ Labour Mobility. Two-yearly. Latest issue February 1996	6209.0
■ Multiple Jobholding. Irregular. Latest issue August 1994	6216.0.40.001
■ Participation in Education. Annual. Latest issue September 1996	6272.0
■ Persons Employed at Home. Irregular. Latest issue September 1995	6275.0
■ Persons Not in the Labour Force. Annual. Latest issue September 1996	6220.0
■ Persons Who had Re-entered the Labour Force. Irregular. Latest issue July 1995	6264.0.40.001
■ Persons Who Have Left the Labour Force. Irregular. Latest issue September 1994	6267.0.40.001
■ Retirement and Retirement Intentions. Irregular. Latest issue November 1994	6238.0.40.001
■ Successful and Unsuccessful Job Search Experience. Two-yearly. Latest issue July 1996	6245.0
■ Superannuation. Irregular. Latest issue November 1995	6319.0
■ Trade Union Members. Two-yearly. Latest issue August 1996	6325.0
■ Training and Education Experience. Irregular. Latest issue 1993	6278.0
■ Transition from Education to Work. Annual. Latest issue May 1996	6227.0
■ Underemployed Workers. Annual. Latest issue September 1996	6265.0
■ Weekly Earnings of Employees (Distribution). Annual. Latest issue August 1995	6310.0.40.001
■ Working Arrangements. Irregular. Latest issue August 1995	6342.0.40.001

FORTHCOMING SUPPLEMENTARY SURVEYS

Topic	Survey month	Release
Job Search Experience of Unemployed Persons	July 1997	December 1997
Retrenchments and Redundancies	July 1997	February 1998
Weekly Earnings of Employees (Distribution)	August 1997	January 1998
Working Arrangements	August 1997	February 1998

INQUIRIES

Central Office: (02) 6252 6504

Regional Offices:

SYDNEY	(02) 9268 4493	ADELAIDE	(08) 8237 7365
MELBOURNE	(03) 9615 7677	HOBART	(03) 6222 5841
BRISBANE	(07) 3222 6351	DARWIN	(08) 8943 2150
PERTH	(08) 9360 5943	CANBERRA	(02) 6207 0823